

# CERAMCO



**CHAUSSÉE DE NIVELLES 89F  
B 7170 MANAGE**

**WWW.CERAMCO.BE**

**TÉL: 064 57 04 40**

**FAX: 064 57 04 39**

**EMAIL: [ceramcoelec@skynet.be](mailto:ceramcoelec@skynet.be)**

## Tarif 2011

prix htva - prijs excl. btw

<b>remise :</b> <b>korting :</b>	
-------------------------------------	--

horaire d'ouverture : opening uren :
---

**8 - 16.30**

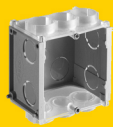
<b>franco : 300 €</b>
-----------------------

frais de port : port kost :	
--------------------------------	--

9 €

Les renseignements et les prix repris dans ce tarif ne le sont qu'à titre informatif. CERAMCO se réserve le droit de supprimer ou remplacer tout article du tarif en raison d'impératifs logistiques ou commerciaux. Certains articles ne sont pas nécessairement de stock, mais peuvent être commandés et livrés dans les plus brefs délais

De gegevens en de prijzen in deze tarief zijn enkel van informatieve aard. CERAMCO behoudt zich het recht voor de samenstelling van het goederen assortiment te wijzigen en de in deze tarief vermelde artikelen te vervangen of af te schaffen, dit wegens logistieke of commerciële redenen. Sommige artikelen zijn niet noodzakelijk voorradig, maar kunnen besteld en geleverd worden binnen de kortste termijn.



1

### COFFRET IP20

### VERDEELKAST IP20

Type	🔌	Ref.	€
2 MOD 55x135x80 MM	50	<b>9002</b>	2,49 pc/st
4 MOD 100x135x90 MM	60	<b>9004</b>	4,36 pc/st



### COFFRET IP40

### VERDEELKAST IP40

- coffrets livrés sans barrette de terre.

- geleverd zonder aardingstrip

Type	🔌	Ref.	€
8 MOD 230x200x110 MM	14	<b>970008</b>	11,07 pc/st
12 MOD 300x200x110 MM	10	<b>970012</b>	14,57 pc/st
24 MOD 315x400x110 MM	1	<b>970024</b>	36,44 pc/st
36 MOD 315x525x110 MM	1	<b>970036</b>	52,3 pc/st



### COFFRET IP65 SERIE 92

### VERDEELKAST IP65

- coffrets livrés sans barrettes de terre.

- geleverd zonder aardingstrip

Type	🔌	Ref.	€
4 MOD 120x160x90 MM	40	<b>9204</b>	8,75 pc/st
8 MOD 200x160x90 MM	26	<b>9208</b>	11,66 pc/st
12 MOD 250x200x110 MM	14	<b>9212</b>	17,49 pc/st



### COFFRET IP65 SERIE 920

### VERDEELKAST IP65

- coffrets livrés sans barrettes de terre.

- geleverd zonder aardingstrip

Type	🔌	Ref.	€
12 MOD 250x250x140 MM	1	<b>92012</b>	25,77 pc/st
24 MOD 250x375x140 MM	1	<b>92024</b>	38,90 pc/st
48 MOD 355x500x140 MM	1	<b>92048</b>	86,20 pc/st





1

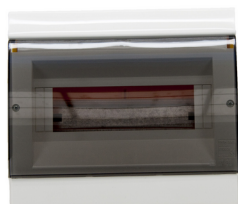
**COFFRET IP65 SERIE 940**

- coffrets livrés sans barrettes de terre.

Type	☼	Ref.	€
2 MOD 102x156x100 MM	20	94002	8,75 pc/st
4 MOD 142x210x100 MM	20	94004	16,99 pc/st
8 MOD 215x210x100 MM	8	94008	21,35 pc/st
12 MOD 290x260x133 MM	4	94012	37,84 pc/st
18 MOD 410x280x133 MM	3	94018	42,60 pc/st
24 MOD 290x420x133 MM	1	94024	45,74 pc/st

**VERDEELKAST IP65**

- geleverd zonder aardingstrip

**COFFRET ENCASTRE IP40**

- coffrets livrés sans barrettes de terre.

Type	☼	Ref.	€
4 MOD 120x200x94 MM	12	97004B	8,37 pc/st
8 MOD 230x200x94 MM	14	97008B	11,07 pc/st
12 MOD 300x200x94 MM	10	97012B	13,75 pc/st
24 MOD 315x400x105 MM	1	97024B	34,86 pc/st
36 MOD 315x525x105 MM	1	97036B	49,88 pc/st

**INBOUWKAST IP40**

- geleverd zonder aardingstrip

**COFFRET ENCASTRE METAL IP30**

- coffrets livrés avec barrettes de terre.

Type	☼	Ref.	€
12 MOD 330x310x98 MM	1	HWV12ST	43,23 pc/st
24 MOD 330x440x98 MM	1	HWV24ST	50,40 pc/st
36 MOD 330x555x98 MM	1	HWV36ST	63,05 pc/st

**METAALINBOUWKAST IP30**

- geleverd met aardingstrip

**BARRETTE DE TERRE POUR COFFRET MARLANVIL**

Type	☼	Ref.	€
8 MOD	30	100608T	3,45 pc/st
12/24/36/48 MOD	20	100612T	4,65 pc/st
18 MOD	10	100618T	7,25 pc/st

**MARLANVIL AARDINGSRIL**

Type	Emb./Vpk.	☼	Ref.	€
8 MOD	E	10	100608E	3,95 pc/st
12/24/36/48 MOD	E	10	100612E	5,15 pc/st
18 MOD	E	10	100618E	7,75 pc/st



1

### BARRETTE DE TERRE B4

### AARDINGSKLEM

Type		☞	Ref.	€
7x16 <sup>2</sup>	■	10	<b>B4</b>	2,9 pc/st
7x16 <sup>2</sup>	■	100	<b>B41</b>	1,9 pc/st

Type	Emb./Vpk.	☞	Ref.	€
7x16 <sup>2</sup>	E	10	<b>B4E</b>	3,2 pc/st



### MINIJUMP

### MINIJUMP

Type		☞	Ref.	€
2 Amp		10	<b>AB91C2</b>	9,42 pc/st
4 Amp		10	<b>AB91C4</b>	9,42 pc/st
6 Amp		10	<b>AB91C6</b>	8,99 pc/st
10 Amp		10	<b>AB91C10</b>	8,99 pc/st
16 Amp		10	<b>AB91C16</b>	8,99 pc/st
20 Amp		10	<b>AB91C20</b>	8,99 pc/st
25 Amp		10	<b>AB91C25</b>	8,99 pc/st
32 Amp		10	<b>AB91C32</b>	9,42 pc/st

Type	Emb./Vpk.	☞	Ref.	€
2 Amp	E	10	<b>AB91C2E</b>	9,92 pc/st
4 Amp	E	10	<b>AB91C4E</b>	9,92 pc/st
6 Amp	E	10	<b>AB91C6E</b>	9,49 pc/st
10 Amp	E	10	<b>AB91C10E</b>	9,49 pc/st
16 Amp	E	10	<b>AB91C16E</b>	9,49 pc/st
20 Amp	E	10	<b>AB91C20E</b>	9,49 pc/st
25 Amp	E	10	<b>AB91C25E</b>	9,49 pc/st
32 Amp	E	10	<b>AB91C32E</b>	9,92 pc/st



### DISJONCTEUR 2 POLES

### AUTOMAAT 2 POLIG

Type		☞	Ref.	€
6 Amp		5	<b>AB232C6</b>	12,68 pc/st
10 Amp		5	<b>AB232C10</b>	12,68 pc/st
16 Amp		5	<b>AB232C16</b>	8,96 pc/st
20 Amp		5	<b>AB232C20</b>	8,96 pc/st
25 Amp		5	<b>AB232C25</b>	12,68 pc/st
32 Amp		5	<b>AB232C32</b>	12,68 pc/st
40 Amp		5	<b>AB232C40</b>	15,15 pc/st



### DISJONCTEUR 3 POLES

### AUTOMAAT 3 POLIG

Type		☞	Ref.	€
10 Amp		1	<b>AB233C10</b>	24,18 pc/st
16 Amp		1	<b>AB233C16</b>	24,18 pc/st
20 Amp		1	<b>AB233C20</b>	24,18 pc/st
25 Amp		1	<b>AB233C25</b>	25,88 pc/st
32 Amp		1	<b>AB233C32</b>	25,88 pc/st
40 Amp		1	<b>AB233C40</b>	26,38 pc/st

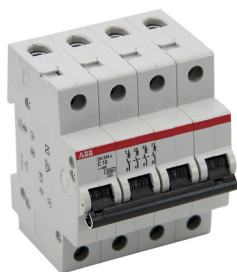




1



# ABB



## DISJONCTEUR 4 POLES

## AUTOMAAT 4 POLIG

Type	⚡	Ref.	€
10 Amp	1	<b>AB234C10</b>	31,36 pc/st
16 Amp	1	<b>AB234C16</b>	31,36 pc/st
20 Amp	1	<b>AB234C20</b>	31,36 pc/st
25 Amp	1	<b>AB234C25</b>	33,64 pc/st
32 Amp	1	<b>AB234C32</b>	33,64 pc/st
40 Amp	1	<b>AB234C40</b>	33,64 pc/st

# ABB



## INTERRUPTEUR DIFFERENTIEL

## DIFFERENTIEEL SCHAKELAAR

Type	⚡	Ref.	€
40 Amp 2P 300 MAmp	1	<b>AB240300</b>	69,95 pc/st
40 Amp 2P 30 MAmp	1	<b>AB24030</b>	69,95 pc/st
40 Amp 4P 300 MAmp	1	<b>AB440300</b>	74,46 pc/st
40 Amp 4P 30 MAmp	1	<b>AB44030</b>	74,46 pc/st
63 Amp 2P 300 MAmp	1	<b>AB263300</b>	104,38 pc/st
63 Amp 2P 30 MAmp	1	<b>AB26330</b>	104,38 pc/st
63 Amp 4P 300 MAmp	1	<b>AB463300</b>	104,38 pc/st
63 Amp 4P 30 MAmp	1	<b>AB46330</b>	104,38 pc/st



## BARRE DE PONTAGE 2 P.

## KAMGELEIDER 2 P.

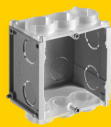
- PEIGNE A FOURCHE  
SECTION 10 MM<sup>2</sup>

- KAMGELEIDER MET VORK  
SECTIE 10 MM<sup>2</sup>

Type	⚡	Ref.	€
4 MOD	10	<b>E50204</b>	2,74 pc/st
8 MOD	10	<b>E50208</b>	3,96 pc/st
12 MOD	10	<b>E50212</b>	5,67 pc/st
18 MOD	10	<b>E50218</b>	8,8 pc/st
1000 MM	20	<b>E70256</b>	18,45 pc/st



Type	Emb./Vpk.	⚡	Ref.	€
4 MOD	E	1	<b>E50204E</b>	3,14 pc/st
8 MOD	E	1	<b>E50208E</b>	4,36 pc/st
12 MOD	E	1	<b>E50212E</b>	6,07 pc/st
18 MOD	E	1	<b>E50218E</b>	9,2 pc/st
1000 MM	E	1	<b>E70256E</b>	18,85 pc/st



1

### BARRE DE PONTAGE 3 P.

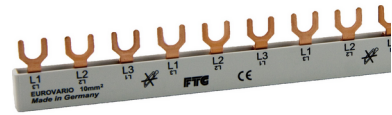
- PEIGNE A FOURCHE  
SECTION 10 MM<sup>2</sup>

Type	☞	Ref.	€
12 MOD	10	<b>E50312</b>	5,93 pc/st
18 MOD	10	<b>E50318</b>	10,01 pc/st
1000 MM	10	<b>E71357</b>	26,92 pc/st

Type	Emb./Vpk.	☞	Ref.	€
12 MOD	E	1	<b>E50312E</b>	6,33 pc/st
18 MOD	E	1	<b>E50318E</b>	10,41 pc/st
1000 MM	E	1	<b>E71357E</b>	27,32 pc/st

### KAMGELEIDER 3 P.

- KAMGELEIDER MET VORK  
SECTIE 10 MM<sup>2</sup>



### BARRE DE PONTAGE 4 P.

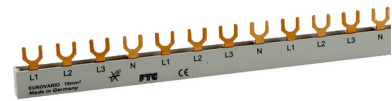
- PEIGNE A FOURCHE  
SECTION 10 MM<sup>2</sup>  
L1 L2 L3 N L1 L2 L3 N....

Type	☞	Ref.	€
12 MOD	10	<b>E50412</b>	10,5 pc/st
18 MOD	10	<b>E50418</b>	13,95 pc/st
1000 MM	10	<b>E75456</b>	56,48 pc/st

Type	Emb./Vpk.	☞	Ref.	€
12 MOD	E	1	<b>E50412E</b>	10,9 pc/st
18 MOD	E	1	<b>E50418E</b>	14,35 pc/st
1000 MM	E	1	<b>E75456E</b>	56,88 pc/st

### KAMGELEIDER 4 P.

- KAMGELEIDER MET VORK  
SECTIE 10 MM<sup>2</sup>  
L1 L2 L3 N L1 L2 L3 N....



### BARRE DE PONTAGE 4 P.

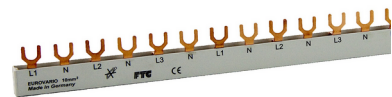
- PEIGNE A FOURCHE  
SECTION 10 MM<sup>2</sup>  
L1 N L2 N L3 N L1 N L2 N....

Type	☞	Ref.	€
12 MOD	10	<b>E57412</b>	8,5 pc/st
18 MOD	10	<b>E57418</b>	14,58 pc/st
1000 MM	10	<b>E77354</b>	62,74 pc/st

Type	Emb./Vpk.	☞	Ref.	€
12 MOD	E	1	<b>E57412E</b>	8,9 pc/st
18 MOD	E	1	<b>E57418E</b>	14,98 pc/st
1000 MM	E	1	<b>E77354E</b>	63,14 pc/st

### KAMGELEIDER 4 P.

- KAMGELEIDER MET VORK  
SECTIE 10MM<sup>2</sup>  
L1 N L2 N L3 N L1 N L2 N....



### BARRE DE PONTAGE 4 P.

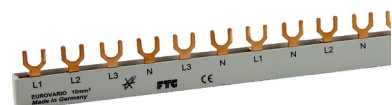
- PEIGNE A FOURCHE  
SECTION 10 MM<sup>2</sup>  
L1 L2 L3 N L1 N L2 N L3 N

Type	☞	Ref.	€
12 MOD	10	<b>E59430</b>	11,03 pc/st
18 MOD	10	<b>E59431</b>	16,24 pc/st

Type	Emb./Vpk.	☞	Ref.	€
12 MOD	E	1	<b>E59430E</b>	11,43 pc/st
18 MOD	E	1	<b>E59431E</b>	16,64 pc/st

### KAMGELEIDER 4 P.

- KAMGELEIDER MET VORK  
SECTIE 10 MM<sup>2</sup>  
L1 L2 L3 N L1 N L2 N L3 N





1

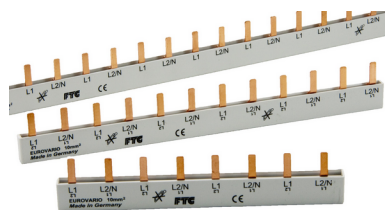


### BARRE DE PONTAGE 4 P.

- PEIGNE A FOURCHE  
SECTION 10 MM<sup>2</sup>  
L1 L2 L3 N L1 N L2 N L3 N

Type	⊗	Ref.	€
1000 MM	10	<b>E79452</b>	62,74 pc/st

Type	Emb./Vpk.	⊗	Ref.	€
1000 MM	E	1	<b>E79452E</b>	63,14 pc/st

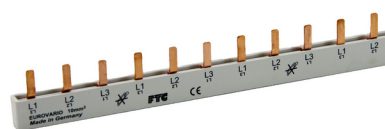


### BARRE DE PONTAGE 2 P.

- PEIGNE A PIN  
SECTION 10 MM<sup>2</sup>

Type	⊗	Ref.	€
4 MOD	10	<b>E60204</b>	2,74 pc/st
8 MOD	10	<b>E60208</b>	3,96 pc/st
12 MOD	10	<b>E60212</b>	5,67 pc/st
18 MOD	10	<b>E60218</b>	8,80 pc/st
1000 MM	20	<b>E80258</b>	20,15 pc/st

Type	Emb./Vpk.	⊗	Ref.	€
4 MOD	E	1	<b>E60204E</b>	3,14 pc/st
8 MOD	E	1	<b>E60208E</b>	4,36 pc/st
12 MOD	E	1	<b>E60212E</b>	6,07 pc/st
18 MOD	E	1	<b>E60218E</b>	9,20 pc/st
1000 MM	E	1	<b>E80258E</b>	20,55 pc/st

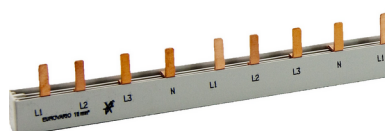


### BARRE DE PONTAGE 3 P.

- PEIGNE A PIN  
SECTION 10 MM<sup>2</sup>

Type	⊗	Ref.	€
12 MOD	10	<b>E60312</b>	5,93 pc/st
18 MOD	10	<b>E60318</b>	10,01 pc/st
1000 MM	10	<b>E80357</b>	26,92 pc/st

Type	Emb./Vpk.	⊗	Ref.	€
12 MOD	E	1	<b>E60312E</b>	6,33 pc/st
18 MOD	E	1	<b>E60318E</b>	10,41 pc/st
1000 MM	E	1	<b>E80357E</b>	27,32 pc/st



### BARRE DE PONTAGE 4 P.

- PEIGNE A PIN  
SECTION 10 MM<sup>2</sup>  
L1 L2 L3 N L1 L2 L3 N...

Type	⊗	Ref.	€
12 MOD	10	<b>E60412</b>	10,5 pc/st
1000 MM	10	<b>E85456</b>	59,38 pc/st

Type	Emb./Vpk.	⊗	Ref.	€
12 MOD	E	1	<b>E60412E</b>	10,90 pc/st
1000 MM	E	1	<b>E85456E</b>	59,88 pc/st

### KAMGELEIDER 4 P.

- KAMGELEIDER MET VORK  
SECTIE 10 MM<sup>2</sup>  
L1 L2 L3 N L1 N L2 N L3 N

### KAMGELEIDER 2 P.

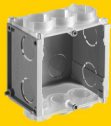
- KAMGELEIDER MET VORK  
SECTIE 10 MM<sup>2</sup>

### KAMGELEIDER 3 P.

- KAMGELEIDER MET PIN  
SECTIE 10 MM<sup>2</sup>

### KAMGELEIDER 4 P.

- KAMGELEIDER MET PIN  
SECTIE 10 MM<sup>2</sup>  
L1 L2 L3 N L1 L2 L3 N...



1

### BARRE DE PONTAGE 4 P.

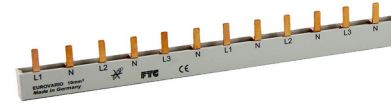
- PEIGNE A PIN  
SECTION 10 MM<sup>2</sup>  
L1 L2 L3 N L1 N L2 N L3 N

Type	☞	Ref.	€
12 MOD	10	<b>E67412</b>	8,5 pc/st
18 MOD	10	<b>E67418</b>	13,55 pc/st
1000 MM	10	<b>E86354</b>	62,74 pc/st

Type	Emb./Vpk.	☞	Ref.	€
12 MOD	E	1	<b>E67412E</b>	8,9 pc/st
18 MOD	E	1	<b>E67418E</b>	13,95 pc/st
1000 MM	E	1	<b>E86354E</b>	63,14 pc/st

### KAMGELEIDER 4 P.

- KAMGELEIDER MET PIN  
SECTIE 10 MM<sup>2</sup>  
L1 L2 L3 N L1 N L2 N L3 N



### BARRE DE PONTAGE 4 P.

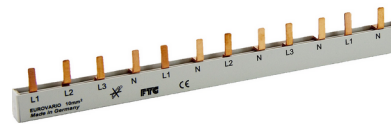
- PEIGNE A PIN  
SECTION 10 MM<sup>2</sup>  
L1 L2 L3 N L1 N L2 N L3 N

Type	☞	Ref.	€
12 MOD	10	<b>E69430</b>	11,03 pc/st
18 MOD	10	<b>E69431</b>	16,24 pc/st
1000 MM	10	<b>E89452</b>	62,74 pc/st

Type	Emb./Vpk.	☞	Ref.	€
12 MOD	E	1	<b>E69430E</b>	11,43 pc/st
18 MOD	E	1	<b>E69431E</b>	16,64 pc/st
1000 MM	E	1	<b>E89452E</b>	63,14 pc/st

### KAMGELEIDER 4 P.

- KAMGELEIDER MET PIN  
SECTIE 10 MM<sup>2</sup>  
L1 L2 L3 N L1 N L2 N L3 N



### PROTECTION POUR PEIGNE

### AFDEKKING

Type	☞	Ref.	€
5 MOD	10	<b>E50002</b>	1,49 pc/st

Type	Emb./Vpk.	☞	Ref.	€
5 MOD	E	10	<b>E50002E</b>	1,81 pc/st



### KIT RAIL DIN 35 MM

### KIT RAIL DIN 35 MM

Type	☞	Ref.	€
180 MM	50	<b>100308</b>	1,55 pc/st
250 MM	50	<b>100312</b>	1,78 pc/st

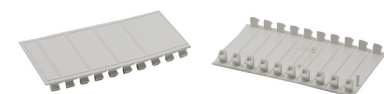


### OBTURATEUR

### AFSLUITER

Type	☞	Ref.	€
5 MODUL	150	<b>1000T</b>	0,69 pc/st

Type	Emb./Vpk.	☞	Ref.	€
5 MODUL	E	10	<b>1000TE</b>	1,88/2 pc/st





1



### COLLIER EQUIPOTENTIEL

Type	Ref.	€
INOX 200 MM	20 <b>COL</b>	2,2 pc/st

Type	Emb./Vpk.	Ref.	€
INOX 200 MM	E	10 <b>COLE</b>	2,54 pc/st

### BANDAARDINGSKLEM



### COUPURE DE TERRE.

Ref.	€
10 <b>CT</b>	5,95 pc/st

### AARDINGSONDERBREKER

Emb./Vpk.	Ref.	€
E	10 <b>CTE</b>	6,25 pc/st



### BARRETTE POUR COUPURE DE TERRE

- A COMBINER AVEC LA COUPURE DE TERRE POUR OBTENIR UN T

Ref.	€
20 <b>BAT</b>	3,87 pc/st

### RAIL VOOR AARDINGSONDERBREKER

- IN COMBINATIE MET AARDINGSONDERBREKER VOOR MONTAGE IN T

Emb./Vpk.	Ref.	€
E	10 <b>BATE</b>	4,17 pc/st



### PIQUET DE TERRE CUIVRE

Type	Ref.	€
1,5M dia16 MM	10 <b>PI16</b>	10,84 pc/st

### RONDE AARDINGSSTAAF



### CLAME POUR PIQUET DE TERRE

Type	Ref.	€
16 MM	100 <b>B3</b>	1,44 pc/st

### AANSLUITRING

Type	Emb./Vpk.	Ref.	€
16 MM	E	10 <b>B3E</b>	1,79 pc/st



### MANCHON POUR PIQUET

Type	Ref.	€
filet/draad 16 MM	50 <b>MB3</b>	2,78 pc/st

### VERBINDINGSMOF

Type	Emb./Vpk.	Ref.	€
filet/draad 16 MM	E	10 <b>MB3E</b>	3,15 pc/st



1

### PIQUET DE TERRE EN CROIX AARDINGSTAAF

Type	🔌	Ref.	€
1,5 M GALVA	10	PICR	17,76 pc/st



### BOULONS POUR PIQUET AANSLUITKLEM

Type	🔌	Ref.	€
SIMPLE ENKEL	100	B1	1,4 pc/st
DOUBLE DUBBEL	50	B2	2,45 pc/st



Type	Emb./Vpk.	🔌	Ref.	€
SIMPLE ENKEL	E	10	B1E	1,88 pc/st
DOUBLE DUBBEL	E	10	B2E	2,96 pc/st

### BOITE DE DERIVATION IP30 AFTAKDOOS IP30

- BORNIER INCLUS

- MET AANSLUITINGSKLEM

Type	🔌	Ref.	€
75x75x25 MM □	25x10	KPK	1,735 pc/st



Type	Emb./Vpk.	🔌	Ref.	€
75x75x25 MM □	E	10	KPKE	2,18 pc/st

### BOITE DE DERIV A ENCASTRE INBOUW AFTAKDOOS

Type	🔌	Ref.	€
70x70x30 MM	25	BU21	1,26 pc/st



Type	Emb./Vpk.	🔌	Ref.	€
70x70x30 MM	E	100	BU21C	1,33 pc/st

### BOITE DE DERIVATION IP54 AFTAKDOOS IP54

Type	🔌	Ref.	€
75x37x40 MM	15x20	K35	1,12 pc/st
75x75x40 MM	10x20	K70	1,19 pc/st



### BOITE DE DERIVATION CS AFTAKDOOS IP65

- Entrées souples à membrane.

- Soepele membraaningangen.

Type	🔌	Ref.	€
Ø 65x40 MM	130	001CS	1,32 pc/st
Ø 80x40 MM	90	002CS	1,7 pc/st
80x80x40 MM	90	003CS	1,99 pc/st
94x94x50 MM	56	005CS	3,37 pc/st





1



### BOITE DE DERIVATION IP44

### AFTAKDOOS IP44

Type	⊗	Ref.	€
∅ 65x40 MM	125	001	1,21 pc/st
∅ 80x40 MM	90	002	1,42 pc/st
80x80x45 MM	60	003	1,69 pc/st



### BOITE DE DERIVATION IP65

### AFTAKDOOS IP65

Type	⊗	Ref.	€
100x100x50 MM	60	005	3,37 pc/st
100x100x70 MM	60	006	3,61 pc/st
123x75x51 MM	100	007	3,65 pc/st
150x110x70 MM	44	008	5,82 pc/st
190x145x72 MM	25	009	8,52 pc/st
243x190x90 MM	14	010	14 pc/st



### BOITE DE DERIVATION GRAND MODELE IP65

### AFTAKDOOS IP65

Type	⊗	Ref.	€
243x190x110 MM	12	011PL	11,52 pc/st
300x220x120 MM	8	012APL	24,85 pc/st

### BOITE DE DERIVATION IP66

### AFTAKDOOS IP66



Type	⊗	Ref.	€
76x76x51 MM vide/leer	10	K1850	2,49 pc/st
76x76x51 MM av.bornier/met aansluitigsklem	10	K1850B	3,49 pc/st



### BOITE DE DERIVATION IP66

### AFTAKDOOS IP66

Type	⊗	Ref.	€
85x85x51 MM vide/leer	5	K0020	4,28 pc/st
85x85x51 MM av.bornier/met aansluitingsklem	5	K0020B	4,76 pc/st



1

### MAGIC GEL

- gel d'étanchéité deux composants  
pas de date de péremption  
IP68

Type	🌀	Ref.	€
300 ML	1	<b>GEL300</b>	18,96 pc/st

### MAGIC GEL

- gel twee componenten  
geen verldatum  
IP68



### ENTREE TUBE M20

Type	Coloris	🌀	Ref.	€
M20	RAL 7035	50	<b>R1620</b>	0,48 pc/st

Type	Coloris	Emb./Vpk.	🌀	Ref.	€
M20	RAL 7035	E	10	<b>R1620E</b>	2,32/4 pc/st



### PRESSE-ETOUPE METRIQUE

Type	🌀	Ref.	€
M16	50	<b>P16</b>	0,32 pc/st
M20	50	<b>P20</b>	0,32 pc/st
M25	20	<b>P25</b>	0,59 pc/st

Type	Emb./Vpk.	🌀	Ref.	€
M16	E	10	<b>P16E</b>	1,7/4 pc/st
M20	E	10	<b>P20E</b>	1,7/4 pc/st
M25	E	10	<b>P25E</b>	1,7/2 pc/st



### CONTRE-ECROU METRIQUE

Type	🌀	Ref.	€
M16	50	<b>PE16</b>	0,10 pc/st
M20	50	<b>PE20</b>	0,12 pc/st
M25	50	<b>PE25</b>	0,14 pc/st

Type	Emb./Vpk.	🌀	Ref.	€
M16	E	10	<b>PE16E</b>	0,80/4 pc/st
M20	E	10	<b>PE20E</b>	0,82/4 pc/st
M25	E	10	<b>PE25E</b>	0,78/2 pc/st



### BOUCHON METRIQUE

Type	🌀	Ref.	€
M16	100	<b>PB16</b>	0,14 pc/st
M20	100	<b>PB20</b>	0,14 pc/st

Type	Emb./Vpk.	🌀	Ref.	€
M16	E	10	<b>PB16E</b>	0,96/4 pc/st
M20	E	10	<b>PB20E</b>	0,96/4 pc/st





1



### BOUCHON METRIQUE

### METRISCHE TEGENMOER

Type	☞	Ref.	€
M25	100	<b>PB25</b>	0,19 pc/st

Type	Emb./Vpk.	☞	Ref.	€
M25	E	10	<b>PB25E</b>	0,88/2 pc/st

### PRESSE-ETOUPE PG

### WARTEL PG



Type	☞	Ref.	€
PG11	50	<b>PG11</b>	0,28 pc/st
PG13	50	<b>PG13</b>	0,28 pc/st
PG16	50	<b>PG16</b>	0,31 pc/st
PG21	20	<b>PG21</b>	0,64 pc/st
PG29	20	<b>PG29</b>	1,24 pc/st

Type	Emb./Vpk.	☞	Ref.	€
PG11+écrou/tegenmo E	E	10	<b>PG11E</b>	2,25/4 pc/st
PG13	E	10	<b>PG13E</b>	1,62/4 pc/st
PG16	E	10	<b>PG16E</b>	1,74/4 pc/st
PG21	E	10	<b>PG21E</b>	1,74/2 pc/st
PG29+écrou/tegenmo E	E	10	<b>PG29E</b>	1,92 pc/st

### CONTRE-ECROU PG

### TEGENMOER PG



Type	☞	Ref.	€
PG11	50	<b>PGE11</b>	0,12 pc/st
PG13	50	<b>PGE13</b>	0,12 pc/st
PG16	50	<b>PGE16</b>	0,15 pc/st
PG21	20	<b>PGE21</b>	0,23 pc/st
PG29	20	<b>PGE29</b>	0,46 pc/st

Type	Emb./Vpk.	☞	Ref.	€
PG13	E	10	<b>PGE13E</b>	0,94/4 pc/st
PG16	E	10	<b>PGE16E</b>	1,02/4 pc/st
PG21	E	10	<b>PGE21E</b>	0,94/2 pc/st

### BOUCHON PG

### STOP PG



Type	☞	Ref.	€
PG11	100	<b>PGB11</b>	0,14 pc/st
PG13	50	<b>PGB13</b>	0,15 pc/st
PG16	50	<b>PGB16</b>	0,16 pc/st
PG21	50	<b>PGB21</b>	0,24 pc/st
PG29	50	<b>PGB29</b>	0,57 pc/st

Type	Emb./Vpk.	☞	Ref.	€
PG11	E	10	<b>PGB11E</b>	1,06/4 pc/st
PG13	E	10	<b>PGB13E</b>	1,10/4 pc/st
PG16	E	10	<b>PGB16E</b>	1,14/4 pc/st
PG21	E	10	<b>PGB21E</b>	0,98/2 pc/st
PG29	E	10	<b>PGB29E</b>	1,07 pc/st



1

## ENTREE

## INGANG

Type	Coloris	☒	Ref.	€
16 MM	RAL 7035	☐	10x100 <b>EN16</b>	0,046 pc/st
20 MM	RAL 7035	☐	10x100 <b>EN20</b>	0,052 pc/st
25 MM	RAL 7035	☐	10x50 <b>EN25</b>	0,09 pc/st

Type	Coloris	Emb./Vpk.	☒	Ref.	€
16 MM	RAL 7035	E	10	<b>EN16E</b>	1,74/30 pc/st
20 MM	RAL 7035	E	10	<b>EN20E</b>	1,94/30 pc/st
25 MM	RAL 7035	E	10	<b>EN25E</b>	1,24/10 pc/st



## MANCHON

## MOF

Type	Coloris	☒	Ref.	€
16 MM	RAL 7035	☐	5x100 <b>M16</b>	0,078 pc/st
20 MM	RAL 7035	☐	5x100 <b>M20</b>	0,117 pc/st
25 MM	RAL 7035	☐	100 <b>M25</b>	0,165 pc/st

Type	Coloris	Emb./Vpk.	☒	Ref.	€
16 MM	RAL 7035	E	10	<b>M16E</b>	1,34/12 pc/st
20 MM	RAL 7035	E	10	<b>M20E</b>	1,81/12 pc/st
25 MM	RAL 7035	E	10	<b>M25E</b>	1,49/6 pc/st



## COUDE

## BOCHT

Type	Coloris	☒	Ref.	€
16 MM	RAL 7035	☐	100 <b>COU16</b>	0,40 pc/st
20 MM	RAL 7035	☐	100 <b>COU20</b>	0,57 pc/st
25 MM	RAL 7035	☐	50 <b>COU25</b>	1,03 pc/st

Type	Coloris	Emb./Vpk.	☒	Ref.	€
16 MM	RAL 7035	E	10	<b>COU16E</b>	2,74/6 pc/st
20 MM	RAL 7035	E	10	<b>COU20E</b>	3,66/6 pc/st
25 MM	RAL 7035	E	10	<b>COU25E</b>	2,54/2 pc/st



## TTH

## TTH

Type	☒	Ref.	€
10 MM	☐	30x3M <b>T10</b>	0,53 m/m
12 MM	☐	30x3M <b>T12</b>	0,53 m/m
16 MM	☐	17x3M <b>T16</b>	0,41 m/m
20 MM	☐	17x3M <b>T20</b>	0,59 m/m
25 MM	☐	10x3M <b>T25</b>	1,11 m/m
32 MM	☐	10x3M <b>T32</b>	1,89 m/m
40 MM	☐	5x3M <b>T40</b>	2,92 m/m
50 MM	☐	5x3m <b>T50</b>	3,62 m/m
20 MM	■	17x3m <b>T20R</b>	0,77 m/m





1



### TIRE-FIL NYLON

### NYLONTREKVEREN

Type	⌘	Ref.	€
10 M	40	<b>NY10</b>	4,74 pc/st
15 M	30	<b>NY15</b>	6,4 pc/st
20 M	20	<b>NY20</b>	7,73 pc/st
25 M	15	<b>NY25</b>	9,12 pc/st
30 M	15	<b>NY30</b>	10,52 pc/st



### TIRE-FIL METAL

### TREKVEER METAAL

Type	⌘	Ref.	€
10 M	1	<b>NYM10</b>	18,76 pc/st
15 M	1	<b>NYM15</b>	25,78 pc/st
20 M	1	<b>NYM20</b>	32,80 pc/st
25 M	1	<b>NYM25</b>	40,36 pc/st
30 M	1	<b>NYM30</b>	50,09 pc/st



### RESSORT

### BUIGVEER METAAL

Type	⌘	Ref.	€
Ø 16 mm	1	<b>RE16</b>	7,83 pc/st
Ø 20 mm	1	<b>RE20</b>	10,66 pc/st
Ø 25 mm	1	<b>RE25</b>	16,60 pc/st



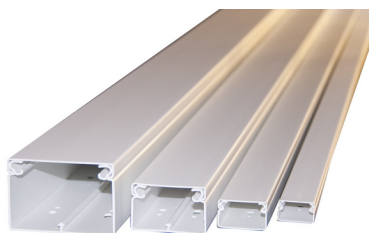
### GOULOTTE AUTOCOLLANTE

### ZELFKLEVENDE KABELBAAN

- Longueur 2 M  
RAL 9010

- Lengt 2 M  
RAL 9010

Type	⌘	Ref.	€
9x5 MM <input type="checkbox"/>	10	<b>DK0905W</b>	2,74 m/m
15x6 MM <input type="checkbox"/>	10	<b>DK1506W</b>	2,92 m/m
10x10 MM <input type="checkbox"/>	10	<b>DK1010W</b>	2,81 m/m
15x10 MM <input type="checkbox"/>	10	<b>DK1510W</b>	2,88 m/m
20x10 MM <input type="checkbox"/>	10	<b>DK2010W</b>	3,35 m/m



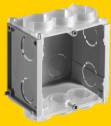
### GOULOTTE

### KABELGOOTSYSTEEM

- Longueur 2 M  
RAL 9010

- Lengt 2 M  
RAL 9010

Type	⌘	Ref.	€
20x10 MM <input type="checkbox"/>	160	<b>GOU20</b>	1,35 m/m
15x15 MM <input type="checkbox"/>	140	<b>GOU15</b>	1,35 m/m
30x15 MM <input type="checkbox"/>	70	<b>GOU30</b>	1,89 m/m
30x30 MM <input type="checkbox"/>	50	<b>GOU3030</b>	2,95 m/m
40x25 MM <input type="checkbox"/>	48	<b>GOU40</b>	3,12 m/m
60x40 MM <input type="checkbox"/>	28	<b>GOU60</b>	5,33 m/m
80x40 MM <input type="checkbox"/>	10	<b>GOU80</b>	6,82 m/m
90x60 MM <input type="checkbox"/>	24	<b>GOU90</b>	10,56 m/m
110x60 MM <input type="checkbox"/>	16	<b>GOU110</b>	13,39 m/m



1

## GOULOTTE

- Longueur 2 M  
RAL 9010

Type		☞	Ref.	€
190x60 MM	<input type="checkbox"/>	14	<b>GOU190</b>	22,36 m/m
230x60 MM	<input type="checkbox"/>	8	<b>GOU230</b>	23,71 m/m

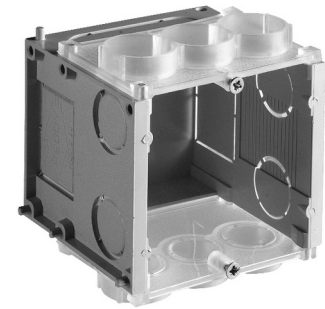
## KABELGOOTSYSTEEM

- Lengte 2 M  
RAL 9010

## BLOCHET

Type		☞	Ref.	€
45 MM		25x10	<b>B45SV</b>	0,67 pc/st
65 MM		25x10	<b>B65SV</b>	0,82 pc/st
45 MM+VIS		25x10	<b>B45</b>	0,74 pc/st
65 MM+VIS		25x10	<b>B65</b>	0,89 pc/st

Type	Emb./Vpk.	☞	Ref.	€
45 MM+VIS	E	140	<b>B45C</b>	0,79 pc/st
45 MM	E	14	<b>B4510</b>	6,82/10 pc/st
65 MM+VIS	E	100	<b>B65C</b>	0,94 pc/st
65 MM	E	10	<b>B6510</b>	8,16/10 pc/st



## ADAPTATEUR 71 MM.

Type		☞	Ref.	€
11 MM		100	<b>RE1480</b>	0,23 pc/st

Type	Emb./Vpk.	☞	Ref.	€
11 MM	E	20	<b>RE1484</b>	1,84/6 pc/st



## COUVERCLE

Type	Emb./Vpk.	☞	Ref.	€
65x67 MM	<input checked="" type="checkbox"/> E	10	<b>RE2721</b>	1,64/10 pc/st

## GIPSDEKSEL



## COUVERCLE A PATTES

Type		☞	Ref.	€
71x71 MM	<input type="checkbox"/>	100	<b>RE2723</b>	0,33 pc/st

Type	Emb./Vpk.	☞	Ref.	€
71x71 MM	<input type="checkbox"/> E	20	<b>RE32706</b>	0,39 pc/st

## DEKSEL





1



### BLOCHET CLOISON

- Avec code-barre

Type	⌘	Ref.	€
Ø 68x47 MM	20	<b>BG45</b>	0,98 pc/st
Ø 68x47 MM	15x20	<b>BG451</b>	0,7 pc/st
Ø 68x61 MM	20	<b>BG60</b>	1,25 pc/st
Ø 68x61 MM	12x20	<b>BG601</b>	0,86 pc/st
2xØ 68x47 MM	10	<b>BG245</b>	2,19 pc/st
2xØ 68x47 MM	10X10	<b>BG2451</b>	1,69 pc/st

### GIPSINBOUWDOOS

- Met barcode

### INTERRUPTEUR DOUBLE DIRECTION



Type	Emb./Vpk.	⌘	Ref.	€
IP20 <input type="checkbox"/>	E	10	<b>LP3B</b>	3,75 pc/st

### WISSELSCHAKELAAR

### BOUTON POUSSOIR



Type	Emb./Vpk.	⌘	Ref.	€
IP20 <input type="checkbox"/>	E	10	<b>LP5B</b>	3,48 pc/st

### DRUKKNOP



### PRISE+TERRE

Type	Emb./Vpk.	⌘	Ref.	€
IP20 <input type="checkbox"/>	E	10	<b>GP1BZP</b>	3,21 pc/st

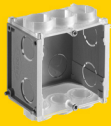
### STOPKONTAKT



### PRISE DOUBLE

Type	Emb./Vpk.	⌘	Ref.	€
IP20 <input type="checkbox"/>	E	5	<b>GP2BZP</b>	5,46 pc/st

### DUBBEL STOPKONTAKT



1

### AQUARIUS IP54

- produit complet.

Type	🔌	Ref.	€
inter. 2 directions/wisselschakelaar	10	<b>NL19922</b>	7,11 pc/st
inter. bipolaire/tweepolig schakelaar	10	<b>NL19930</b>	10,30 pc/st
bouton poussoir/drukknop	10	<b>NL19964</b>	6,80 pc/st

### AQUARIUS IP54

- compleet produkt.



### AQUARIUS IP54

- produit complet.

Type	🔌	Ref.	€
prise/stopkontakt	10	<b>NL19661</b>	6,55 pc/st

### AQUARIUS IP54

- compleet produkt.



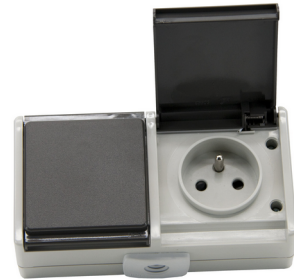
### AQUARIUS IP54

- produit complet.

Type	🔌	Ref.	€
double prises/dubbelstopkontakt	5	<b>NL19716</b>	11,25 pc/st

### AQUARIUS IP54

- compleet produkt.



### AQUARIUS IP54

- interrupteur 2 directions+prise produit complet.

Type	🔌	Ref.	€
inter.+prise/schak.+stopkontakt	5	<b>NL19746</b>	11,78 pc/st

### AQUARIUS IP54

- wisselschakelaar+stopkontakt compleet produkt



### INTERRUPTEUR A CLE

- Interrupteur semi-hermétique livré avec 2 clés

Type	Emb./\pk.	🔌	Ref.	€
IP55	E	1	<b>77191E</b>	26,66 pc/st

### SLEUTELSCHAKELAAR

- Waterdichtsleutelschakelaar met 2 sleutels.





1



### INTERRUPTEUR D'URGENCE EMERGENCY SWITCH

- Inclu 1 contact NO 1 contact NF

Type	☼	Ref.	€
IP55	24	1560E	14,96 pc/st



### PRISE A ENCASTRER INDUSTRIELLE INBOUWSTOPCONTACT

- Prise encastrée+terre IP44

- Inbouwstopkontakt met aard IP44

Type	Volt	☼	Ref.	€
16 Amp	230	■	80 <b>61040</b>	3,36 pc/st

Type	Volt	Emb./Vpk.	☼	Ref.	€
16 Amp	230	■	E 10	<b>61040E</b>	3,76 pc/st



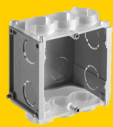
### FICHE MALE CEE CEE STEKKER

Type	Volt	☼	Ref.	€
3P 16 Amp	230	■	10 <b>60136</b>	4,26 pc/st
4P 16 Amp	230	■	10 <b>60149</b>	5,88 pc/st
4P 16 Amp	380	■	10 <b>60146</b>	5,88 pc/st
5P 16 Amp	380	■	10 <b>60156</b>	6,12 pc/st
3P 32 Amp	230	■	10 <b>60236</b>	6,12 pc/st
4P 32 Amp	230	■	10 <b>60249</b>	8,20 pc/st
4P 32 Amp	380	■	10 <b>60246</b>	8,20 pc/st
5P 32 Amp	380	■	10 <b>60256</b>	8,78 pc/st
4P 63 Amp	380	■	2 <b>60346</b>	35,2 pc/st
5P 63 Amp	380	■	2 <b>60356</b>	36,4 pc/st
4P 125 Amp	380	■	2 <b>60446</b>	82,54 pc/st
5P 125 Amp	380	■	2 <b>60456</b>	97,90 pc/st




### PRISE CEE CEE KOPPELSTEKKER

Type	☼	Ref.	€
3P 16 Amp	■	10 <b>62136</b>	5,28 pc/st
4P 16 Amp	■	10 <b>62149</b>	7,79 pc/st
4P 16 Amp	■	10 <b>62146</b>	6,45 pc/st
5P 16 Amp	■	10 <b>62156</b>	6,84 pc/st
3P 32 Amp	■	10 <b>62236</b>	8,05 pc/st
4P 32 Amp	■	10 <b>62249</b>	10,81 pc/st
4P 32 Amp	■	10 <b>62246</b>	8,52 pc/st
5P 32 Amp	■	10 <b>62256</b>	8,95 pc/st
4P 63 Amp	■	2 <b>62346</b>	42,42 pc/st
5P 63 Amp	■	2 <b>62356</b>	44,72 pc/st
4P 125 Amp	■	2 <b>62446</b>	101,96 pc/st
5P 125 Amp	■	2 <b>62456</b>	109,6948 pc/st



### PRISE SUR SOCLE CEE

### CEE STOPCONTACT OBOUW

Type			Ref.	€
3P 16 Amp	■	10	<b>61136</b>	6,83 pc/st
4P 16 Amp	■	10	<b>61149</b>	7,72 pc/st
4P 16 Amp	■	10	<b>61146</b>	7,72 pc/st
5P 16 Amp	■	10	<b>61156</b>	8,15 pc/st
3P 32 Amp	■	8	<b>61236</b>	8,85 pc/st
4P 32 Amp	■	8	<b>61249</b>	9,94 pc/st
4P 32 Amp	■	8	<b>61246</b>	9,94 pc/st
5P 32 Amp	■	8	<b>61256</b>	10,46 pc/st
4P 63 Amp	■	2	<b>61346</b>	54,2 pc/st
5P 63 Amp	■	2	<b>61356</b>	56,6 pc/st
4P 125 Amp	■	2	<b>61446</b>	124,2 pc/st
5P 125 Amp	■	2	<b>61456</b>	128,1 pc/st



1



2



### ATTACHE COLLIER

### VORKKLEM

Type	⊗	Ref.	€
32 MM	50	<b>C32</b>	0,44 pc/st

Type	Emb./Vpk.	⊗	Ref.	€
12 MM	E	5	<b>C1220</b>	2,28/20 pc/st
16 MM	E	10	<b>C5820</b>	2,28/20 pc/st
16 MM	E	5	<b>C5810</b>	7,89/100 pc/st
20 MM	E	10	<b>C3420</b>	2,63/20 pc/st
20 MM	E	5	<b>C3410</b>	9,52/100 pc/st
25 MM	E	5	<b>C1</b>	3,52/20 pc/st
2x16 MM	E	5	<b>C258</b>	3,97/20 pc/st
2x20 MM	E	5	<b>C234</b>	4,03/20 pc/st

### VIS A FRAPPER TETE M6

### SLAGPLUG+KOP M6



Type	⊗	Ref.	€
40x6 MM	24	<b>G61</b>	12,85/100 pc/st

Type	Emb./Vpk.	⊗	Ref.	€
40x6 MM	E	1	<b>G6</b>	13,45/100 pc/st
40x6 MM	E	10	<b>G620</b>	3,85/20 pc/st



### GOUJON TETE M6

### INSLAGPIN+KOP M6

Type	⊗	Ref.	€
18 MM	1	<b>G18</b>	14,60/200 pc/st

Type	Emb./Vpk.	⊗	Ref.	€
18 MM	E	10	<b>G18E</b>	7,94/100 pc/st



### CHASSE-GOUJON M6 (E)

### DREVEL M6 (E)

Type	Emb./Vpk.	⊗	Ref.	€
M6	E	10	<b>GCE</b>	8,42 pc/st



### COLLIER JUXTAPOSABLE

### VEERKLEM

Type	⊗	Ref.	€
16 MM	12x100	<b>12516</b>	0,079 pc/st
20 MM	12x100	<b>12520</b>	0,088 pc/st

Type	Emb./Vpk.	⊗	Ref.	€
16 MM	E	10	<b>12516E</b>	2,22/20 pc/st
20 MM	E	10	<b>12520E</b>	2,55/20 pc/st



2

### ATTACHE PRESSION      DRUKKLEM 12-20MM. (50)

Type	🔗	Ref.	€
6-14 MM	20x50	<b>AP6</b>	0,178 pc/st
12-20 MM	20x50	<b>AP12</b>	0,186 pc/st
16-25 MM	10x50	<b>AP16</b>	0,288 pc/st



Type	Emb./Vpk.	🔗	Ref.	€
6-14 MM	E	10	<b>AP6E</b>	3,97/20 pc/st
12-20 MM	E	10	<b>AP12E</b>	4,07/20 pc/st
16-25 MM	E	10	<b>AP16E</b>	5,98/20 pc/st

### ATTACHE POUTRELLE      PROFIELKLEM

- diamètre des tubes 20 mm.

- buizen diameter 20 mm.

Type	🔗	Ref.	€
4-7 MM	100	<b>AC1</b>	0,40 pc/st
8-12 MM	100	<b>AC2</b>	0,40 pc/st



Type	Emb./Vpk.	🔗	Ref.	€
4-7 MM	E	1	<b>AC1E</b>	8,50/20 pc/st
8-12 MM	E	1	<b>AC2E</b>	8,50/20 pc/st

### ATTACHE ACIER ROUGE      ROODIJZEREN ZADEL

Type	Emb./Vpk.	🔗	Ref.	€
16 MM ■	E	10	<b>AC5820</b>	1,60/20 pc/st
16 MM ■	E	10	<b>AC5810</b>	5,71/100 pc/st
2X16 MM ■	E	1	<b>AC2585</b>	6,73/50 pc/st
20 MM ■	E	10	<b>AC3420</b>	1,77/20 pc/st
20 MM ■	E	10	<b>AC3410</b>	7,18/100 pc/st
2X20 MM ■	E	1	<b>AC2345</b>	9,96/50 pc/st
25 MM ■	E	10	<b>AC112</b>	1,99/12 pc/st
25 MM ■	E	1	<b>AC150</b>	5,72/50 pc/st



### ATTACHE GALVA      IJZEREN ZADELS

Type	Emb./Vpk.	🔗	Ref.	€
16 MM ■	E	1	<b>AG5810</b>	5,83/100 pc/st
20 MM ■	E	1	<b>AG3410</b>	8,43/100 pc/st
25 MM ■	E	1	<b>AG150</b>	6,24/50 pc/st
16 MM ■	E	10	<b>AG5820</b>	1,64/20 pc/st
20 MM ■	E	10	<b>AG3420</b>	1,80/20 pc/st
25 MM ■	E	10	<b>AG112</b>	2,02/12 pc/st

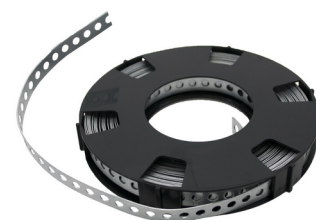


### BANDE PERFOREE      MONTAGEBAND

- longueur 10 m.

- lengt 10 m.

Type	🔗	Ref.	€
12X0.7 MM	10	<b>SPAT</b>	4,98 pc/st





2



### FIXPIN

Type	⌘	Ref.	€
4 MM	1	<b>G4</b>	9,25/200 pc/st

Type	Emb./Vpk.	⌘	Ref.	€
4 MM	E	1	<b>G4E</b>	5,72/100 pc/st

### CHASSE-FIXPIN

Type	⌘	Ref.	€
pour/voor fixpin 4 mm	1	<b>CHAG4</b>	36,58 pc/st

### CLIPS A CHEVILLE

Type	⌘	Ref.	€
16 MM	5	<b>CL16</b>	8,17/50 pc/st
2x16 MM	20	<b>CL216</b>	4,35/20 pc/st
20 MM	5	<b>CL20</b>	9,78/50 pc/st
2x20 MM	20	<b>CL220</b>	4,62/20 pc/st
25 MM	20	<b>CL25</b>	2,36/10 pc/st

Type	Emb./Vpk.	⌘	Ref.	€
16 MM	E	10	<b>CL16E</b>	4,16/20 pc/st
20 MM	E	10	<b>CL20E</b>	4,51/20 pc/st

### ATTACHE A CLOUER

Type	Emb./Vpk.	⌘	Ref.	€	
2x0,75 <sup>2</sup>	□	E	20	<b>275</b>	1,55/50 pc/st
2x1,5 <sup>2</sup>	□	E	20	<b>215</b>	1,88/50 pc/st
2x2,5 <sup>2</sup>	□	E	20	<b>225</b>	1,20/25 pc/st
3x1,5 <sup>2</sup>	□	E	20	<b>315</b>	1,20/25 pc/st
3x2,5 <sup>2</sup>	□	E	20	<b>325</b>	1,34/25 pc/st
4 MM	□	E	20	<b>4B50</b>	1,56/50 pc/st
4 MM	■	E	20	<b>4G50</b>	1,56/50 pc/st
5 MM	■	E	20	<b>5G50</b>	1,74/50 pc/st
6 MM	□	E	20	<b>6B25</b>	1,10/25 pc/st
6 MM	■	E	20	<b>6G25</b>	1,10/25 pc/st
6 MM	□	E	10	<b>6B100</b>	3,22/100 pc/st
6 MM	■	E	10	<b>6G100</b>	3,22/100 pc/st
7 MM	□	E	20	<b>7B25</b>	1,16/25 pc/st
7 MM	□	E	10	<b>7B100</b>	3,44/100 pc/st
8 MM	□	E	20	<b>8B25</b>	1,17/25 pc/st
8 MM	■	E	20	<b>8G25</b>	1,17/25 pc/st
8 MM	□	E	10	<b>8B100</b>	3,61/100 pc/st
8 MM	■	E	10	<b>8G100</b>	3,61/100 pc/st
10 MM	□	E	20	<b>10B20</b>	1,34/20 pc/st



2



### NAGELCLIPS

			☞	Ref.	€
12 MM	■	E	20	<b>10G20</b>	1,34/20 pc/st
14 MM	■	E	10	<b>10B75</b>	3,67/75 pc/st
14 MM	■	E	10	<b>10G75</b>	3,67/75 pc/st
16 MM	■	E	20	<b>12G20</b>	1,56/20 pc/st
16 MM	■	E	10	<b>12G60</b>	3,71/60 pc/st
20 MM	■	E	10	<b>14G20</b>	1,86/20 pc/st
20 MM	■	E	5	<b>14G60</b>	4,73/60 pc/st
25 MM	■	E	10	<b>16G15</b>	1,98/15 pc/st
			5	<b>16G50</b>	5,11/50 pc/st
			10	<b>20G10</b>	2,15/10 pc/st
			5	<b>20G40</b>	6,28/40 pc/st
			5	<b>25G30</b>	6,65/30 pc/st

### ATTACHE MULTICLIPS

### NAGEL MULTICLIPS

Type		Emb./Vpk.	☞	Ref.	€
4-6 MM	□	E	10	<b>46B100</b>	3,13/100 pc/st
4-6 MM	■	E	10	<b>46G100</b>	3,13/100 pc/st
7-9 MM	□	E	10	<b>79B100</b>	3,59/100 pc/st
7-9 MM	■	E	10	<b>79G100</b>	3,59/100 pc/st
10-14 MM	□	E	5	<b>12B100</b>	5,33/100 pc/st
10-14 MM	■	E	5	<b>12G100</b>	5,33/100 pc/st



### ATTACHE LAITON

### MESSINGKLEM

Type	Emb./Vpk.	☞	Ref.	€
3x1,5 <sup>2</sup>	E	10	<b>LAI3E</b>	4,85/100 pc/st



### COLLIER DE CABLAGE BLANC KABELBINDER WIT

Type		Emb./Vpk.	☞	Ref.	€
100x2,5 MM	□	E	300	<b>9050</b>	0,51/100 pc/st
140x3,6 MM	□	E	200	<b>9130</b>	1,25/100 pc/st
200x2,5 MM	□	E	200	<b>9080</b>	1,26/100 pc/st
200x4,8 MM	□	E	100	<b>9260</b>	2,26/100 pc/st
290x3,6 MM	□	E	120	<b>9160</b>	2,83/100 pc/st
290x4,8 MM	□	E	100	<b>9280</b>	3,65/100 pc/st
360x4,8 MM	□	E	75	<b>9290</b>	4,48/100 pc/st
530x4,8 MM	□	E	30	<b>9320</b>	10,40/100 pc/st





2



### COLLIER DE CABLAGE NOIR KABELBINDER ZWART

Type	Emb./Vpk.	⌘	Ref.	€
100x2,5 MM ■	E	300	9051	0,51/100 pc/st
140x3,6 MM ■	E	200	9131	1,25/100 pc/st
200x2,5 MM ■	E	200	9081	1,26/100 pc/st
200x4,8 MM ■	E	100	9261	2,26/100 pc/st
290x3,6 MM ■	E	120	9161	2,83/100 pc/st
290x4,8 MM ■	E	100	9281	3,65/100 pc/st
360x4,8 MM ■	E	75	9291	4,48/100 pc/st
430x4,8 MM ■	E	50	9301	7,74/100 pc/st
200x9 MM ■	E	50	979101	8,15/100 pc/st
290x9 MM ■	E	30	979102	11,90/100 pc/st
380x9 MM ■	E	20	979103	17,20/100 pc/st
530x9 MM ■	E	20	9511	19,78/100 pc/st
780x9 MM ■	E	15	9521	30,36/100 pc/st

### COLLIER DE CABLAGE MINI-PACK KABELBINDERS MINI-PACK



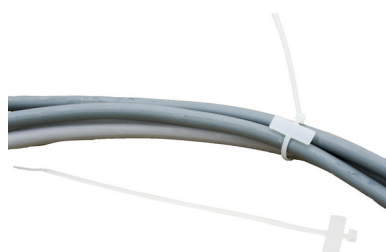
Type	Emb./Vpk.	⌘	Ref.	€
140x3,6 MM □	E	10	C140E	0,89/30 pc/st
200x4,8 MM □	E	10	C200E	1,31/30 pc/st
280x4,8 MM □	E	10	C280E	1,84/30 pc/st
360x4,8 MM □	E	10	C360E	2,20/30 pc/st
140x3,6 MM ■	E	10	CN140E	0,93/30 pc/st
200x4,8 MM ■	E	10	CN200E	1,34/30 pc/st
280x4,8 MM ■	E	10	CN280E	1,96/30 pc/st
360x4,8 MM ■	E	10	CN360E	2,32/30 pc/st
200x9 MM ■	E	10	C9180E	2,76/20 pc/st
290x9 MM ■	E	10	C9265E	3,99/20 pc/st
380x9 MM ■	E	10	C9360E	5,19/20 pc/st

### COLLIER DE CABLAGE COULEUR KABELBINDER KLEUR



Type	Emb./Vpk.	⌘	Ref.	€
200x3,6 MM ■	E	50	9152	2,69/100 pc/st
200x3,6 MM ■	E	50	9153	2,69/100 pc/st
200x3,6 MM ■	E	50	9154	2,69/100 pc/st
200x3,6 MM ■	E	50	9155	2,69/100 pc/st

### COLLIER D'IDENTIF. IDENTIF. KABELBINDER



Type	Emb./Vpk.	⌘	Ref.	€
100x2,5 MM □	E	50	9600	3,81/100 pc/st
200x2,5 MM □	E	50	9610	5,74/100 pc/st



2

**COLLIER REOUVRABLE**

**HEROPENBAARKABELBINDER**

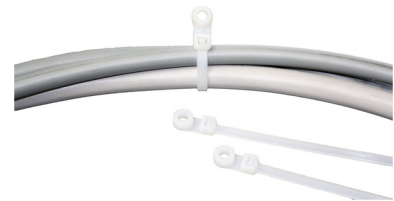
Type		Emb./Vpk.	🌀	Ref.	€
150 MM	□	E	10	<b>962001</b>	7,42/100 pc/st
250 MM	■	E	10	<b>962103</b>	11,61/100 pc/st
300 MM	■	E	10	<b>962104</b>	12,85/100 pc/st



**COLLIER A OEILLET**

**KABELBINDER+OOGJE**

Type		Emb./Vpk.	🌀	Ref.	€
200x4,8 MM	□	E	40	<b>963003</b>	6,42/100 pc/100



**BASE A VIS**

**VIJSBASIS**

Type		Emb./Vpk.	🌀	Ref.	€
15x9,5 MM	□	E	50	<b>9700</b>	5,36/100 pc/st
22x16 MM	■	E	50	<b>9711</b>	10,67/100 pc/st



**BASE ADHESIVE**

**ZELFKLEVENDBASIS**

Type		Emb./Vpk.	🌀	Ref.	€
19x19 MM	□	E	50	<b>9650</b>	8,08/100 pc/st



**CHEVILLE POUR COLLIER**

**KABELBINDERSPLUG**

Type		Emb./Vpk.	🌀	Ref.	€
8 MM	■	E	50	<b>9771</b>	6,99/100 pc/st
8 MM	■	E	10	<b>C920</b>	1,89/20 pc/st



**PINCE POUR COLLIER**

**KABELBINDER TANG**

Type		Emb./Vpk.	🌀	Ref.	€
Max 9,5 MM	■	E	10	<b>8523</b>	29,05 pc/st





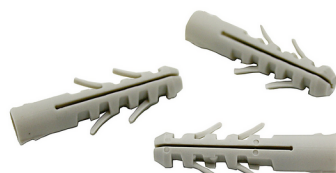
2



### PINCE POUR COLLIER

### KABELBINDER TANG

Type	Emb./Vpk.	⌘	Ref.	€
Max 4,8 MMM ■	E	10	8504	22,84 pc/st



### CHEVILLE NYLON

### NYLONPLUG

Type	⌘	Ref.	€
5 MM	100	LA5	1,2/100 pc/st
6 MM	100	LA6	1,47/100 pc/st
8 MM	50	LA8	2,56/100 pc/st
10 MM	50	LA10	2,56/50 pc/st
12 MM	50	LA12	2,46/25 pc/st
14 MM	50	LA14	3,27/20 pc/st



### CHEVILLE MEGA

### MEGAPLUG

Type	⌘	Ref.	€
6 MM	60	MEGA6	1,69/100 pc/st
8 MM	30	MEGA8	2,81/100 pc/st
10 MM	30	MEGA10	2,53/50 pc/st



### VIS + CHEVILLE

### VIJS + PLUG

Type	⌘	Ref.	€
VIS 4,5x40 MM(6 MM)	50	CI750312	4,56/100 pc/st
VIS 5,0x50 MM(8 MM)	50	CI750314	7,88/100 pc/st



### CHEVILLE TURBO

### TURBOPLUG

Type	⌘	Ref.	€
GYPROC	1	TURBO	5,6/100 pc/st



### METAL SPEED + VIS

### METAAL SPEED + VIJS

Type	⌘	Ref.	€
VIS 4x3,5 MM	10	26150	21,96/100 pc/st



## VIS A FRAPPER

## SLAGPLUG

Type	⌘	Ref.	€
6x40 MM		24x100 <b>G640</b>	0,0668 pc/st
6x60 MM		24x50 <b>G660</b>	0,09 pc/st
6x80 MM		24x50 <b>G680</b>	0,11 pc/st
8x60 MM		24x50 <b>G860</b>	0,11 pc/st
8x80 MM		24x50 <b>G880</b>	0,13 pc/st
8x100 MM		24x50 <b>G810</b>	0,154 pc/st
8x120 MM		24x50 <b>G812</b>	0,201 pc/st
8x135 MM		24x50 <b>G814</b>	0,222 pc/st





3



### BOUTON DE SONNETTE

### BELDRUKKNOP

Type	Coloris	Kleur	Emb./Vpk. ⌘	Ref.	€
24 VOLT	blanc	wit	E	<b>GOLFY7900W</b>	3,52 pc/st
24 VOLT	silver	silver	E	<b>GOLFY7920G</b>	3,52 pc/st
24 VOLT	noir	zwart	E	<b>GOLFY7910B</b>	3,52 pc/st

### BOUTON DE SONNETTE

### BELDRUKKNOP

Type	Emb./Vpk.	⌘	Ref.	€
24 VOLT	□	E	<b>GOLF64003W</b>	4,21 pc/st

### SONNERIE

### BEL

Type	Volt	⌘	Ref.	€
8 Volt	8	2	<b>GR24075</b>	12,10 pc/st

### CARILLON 8 VOLT

### GONG 8 VOLT

- carillon électromécanique 80db/A  
alimentation 8 volt ou 4 piles LR14 non  
fournies

- gong electromecanisch 80db/A  
voeding 8 volt of 4 batterijen LR14 niet  
mee geleverd

Type	Emb./Vpk.	⌘	Ref.	€
8 VOLT	E	1	<b>3248B</b>	18,05 pc/st

### CARILLON KIT

### GONG KIT

- carillon électromécanique 80db/A  
alimentation 8 volt ou 1 pile 6LR61 9V.  
non fournie.  
bouton et cable 9 m. fournis.

- gong electromecanisch 80db/A  
voeding 8 volt of 1 batterij 6LR61 9V.  
niet geleverd  
inclusief drukknop en 9 m. kabel

Type	Emb./Vpk.	⌘	Ref.	€
8 VOLT	E	1	<b>KIT3238B</b>	24,90 pc/st



### TRANSFORMATEUR DE SONNERIE

### BEL TRANSFORMATOR

Type	🔗	Ref.	€
8 volt/1 amp.	1	<b>TFOSON</b>	16,9 pc/st

Type	Emb./Vpk.	🔗	Ref.	€
8 volt/1 amp.	E	1	<b>XO14207</b>	22,95 pc/st



### CARILLON 230 VOLT

### GONG 230 VOLT

- carillon électromecanique 80db/A transfo intégré

- gong electromechanisch 80db/A met transformator

Volt	Emb./Vpk.	🔗	Ref.	€
230	E	1	<b>3250</b>	28,3 pc/st



### CARILLON SANS FIL 50 M

### DRAADLOZE GONG 50 M

- carillon électronique 80db/A livré sans pile (3xLR6) portée 50 m. bouton poussoir livré avec pile 12 volt

- elektronische gong 80db/A geleverd zonder batterijen (3xLR6) bereik 50 m. drukknop geleverd met batterij 12 volt

Emb./Vpk.	🔗	Ref.	€	Bebat
E	1	<b>ONDEIS3969</b>	20,85 pc/st	BEBAT



### DOUBLE CARILLONS SANS FIL

### DUBBEL GONG DRAADLOZE

- 2 carillons électroniques 80db/A livré sans pile (3xLR6) portée 50 m. bouton poussoir livré avec pile 12 volt

- 2 elektronische gong 80db/A geleverd zonder batterijen (3xLR6) bereik 50 m. drukknop geleverd met batterij 12 volt

Type	Emb./Vpk.	🔗	Ref.	€	Bebat
sans fil/zonder draad	E	1	<b>ONDEIS3921</b>	29,15 pc/st	BEBAT



### CARILLON SANS FIL 100 M

### DRAADLOZE GONG 100 M

- portée 100 m. 16 mélodies alimentation carillon (3xLR14) non fournies pile émetteur 12 volt incluse

- elektronische gong geleverd zonder batterijen (3xLR14) bereik 100 m. drukknop geleverd met batterij 12 volt

Type	Emb./Vpk.	🔗	Ref.	€	Bebat
sans fil/draadloze	E	1	<b>ONDEIS100-2G</b>	41,25 pc/st	BEBAT





### CARILLON SANS FIL 200 M

- portée 200 m.
- 12 melodies
- alimentation carillon 3x LR6 non fournies
- pile émetteur 12 volt incluse

### DRAADLOZE GONG 200 M

- elektronische gong geleverd zonder batterijen (3xLR6)
- bereik 200 m.
- 12 melodies
- drukknop geleverd met batterij 12 volt



Type	Emb./Vpk.	Ref.	€	Bebat
sans fil/draadloze	1	<b>ONDEISSU200</b>	48,4 pc/st	BEBAT

3

### CARILLON SANS FIL 230 VOLT

- portée 100 m.
- alimentation sur prise 230 volt
- pile émetteur 12 volt incluse

### DRAADLOZE GONG 230 VOLT

- elektronische gong voeding op stopkontakt 230 volt
- bereik 100 m.
- drukknop geleverd met batterij 12 volt



Type	Emb./Vpk.	Ref.	€	Bebat
sans fil/draadloze	E	<b>ONDEIS100-4G</b>	43,05 pc/st	BEBAT

### BOUTON DE SONNETTE SANS FIL

- bouton poussoir de remplacement convenant pour: carillons sans fil
- ref:100-1/100-2/100-3/100-4
- livré avec pile

### BELDRUKKNOP DRAADLOZE

- vervangdrukknop voor ondeis 100-1/100-2/100-3/100-4
- baterij incl.



Emb./Vpk.	Ref.	€	Bebat
E	<b>XOONDEIS100</b>	11,84 pc/st	BEBAT

### PARLOPHONE 2 FILS

- transformateur intégré au poste intérieur

### PARLOPHONE 2 DRADEN

- transformator inbegrepen in de binnenpost



Type	Emb./Vpk.	Ref.	€
2 fils	E	<b>ORION32068</b>	52,6 pc/st



### PARLOPHONE SANS FIL

- alimentation portier (4xLR6) non fournies  
transformateur pour poste intérieur  
fourni

Type	Emb./Vpk.	🔌	Ref.	€
sans fil/draaloze	E	1	<b>ORION0510G</b>	245,8 pc/st

### PARLOPHONE

- voeding deurpost batterijen (4xLR6) niet  
geleverd  
trafo.voor binnenpost inkl.



### KIT VIDEO COULEUR

- maximun 50 m.de cable 2x0,75 mm<sup>2</sup>

Type	Emb./Vpk.	🔌	Ref.	€
2 fils/2 draden	E	1	<b>SOFIAM2E7</b>	311,80 pc/st

### KIT VIDEO KLEUR

- maximun 50 m. kabel 2x0,75 mm<sup>2</sup>



### GACHE

Type	Volt	🔌	Ref.	€
sans contact stationnaire/zonder stationair contact	8-12 Vac	1	<b>20003B</b>	27,12 pc/st
sans contact stationnaire/zonder stationair contact	12 Vdc	1	<b>20003E</b>	33,03 pc/st
avec contact stationnaire/met stationair contact	8-12 Vac	1	<b>22003B</b>	31,39 pc/st
avec contact stationnaire+débloccag stationair contact+ontgrendeling	8-12 Vac	1	<b>23003B</b>	33,88 pc/st
fonction inversée fermée sous tension/omgekeerde werking gesloten onder spanning	12 Vdc	1	<b>34105E</b>	70,23 pc/st

### DEUROPENER



### VEILLEUSE

- multi-couleurs  
détecteur crépusculaire

Volt	Watt	Emb./Vpk.	🔌	Ref.	€	Recupel
230	0,6	E	1	<b>H47186</b>	8,58 pc/st	1

### NACHTLAMP

- multi-couleur  
nachtdetector



3



### DETECTEUR FUMEE

- livré avec pile 9 volt



### ROOKMELDER

- geleverd met batterij 9 volt

Type	Emb./Vpk. ⌘	Ref.	€	Bebat	Recupel
optique/op'E	6	<b>FUM1</b>	12,55 pc/st	1	1

### DETECTEUR DE MOUVEMENT

- angle 180°  
temporisation 3sec-12min.  
réglage crépusculaire.



### BEWEGINGSMELDER

- hoek 180°  
skakeltijd instelbaar 3sec-12min.  
schemerinstelling

Type	Volt	Emb./Vpk. ⌘	Ref.	€
infrarouge/ir 230	□	E	1	<b>GR94513</b> 27,77 pc/st
infrarouge/ir 230	■	E	1	<b>GR94515</b> 27,77 pc/st

### KIT ALARME

- alarme lumineuse + 110 dB  
portée de détection 7 m.  
pille fournie avec la télécommande.



### KIT ALARM

- lichtalarm + 110 dB  
bewegingsmelder 7 m.  
batterij met afstandbediening geleverd

Type	Emb./Vpk. ⌘	Ref.	€	Bebat
infrarouge/infra E	1	<b>DMAF0313W</b>	38,15 pc/st	1

### ALIMENTATION AC/DC

- sorties 3 4,5 6 7,5 9 12 DCvolt  
protection court-circuits et surcharge  
stabilisé sur toutes les sorties



### NETVOEDING AC/DC

- 3 4,5 6 7,5 9 12 DC volt  
beschermd tegen kortsluiting en  
overbelasting  
volledid stabilisatie bij elke voltage

Type	Volt	Emb./Vpk. ⌘	Ref.	€
500 mAmp	3.....12	E	1	<b>ED060111</b> 12,78 pc/st
1000 mAmp	3.....12	E	1	<b>ED060121</b> 16,95 pc/st
2500 mAmp	3.....12	E	1	<b>ED060126</b> 27,68 pc/st

### KIT 2 PRISES TELECOMMANDEES

- télécommande 4 canaux avec pile 12 volt A23 incluse  
portée 30 m.  
maximum 4 prises



### KIT 2 STOPKONTAKTEN OP AFSTANDBEDIEDING

- afstandbediening 4 kanalen inkl. voeding  
batterij A23  
bereik 30 m.  
maximum 4 stopkontakten

Type	Emb./Vpk. ⌘	Ref.	€
1000 watt	E	1	<b>S316-2 1000W</b> 46,20 pc/st



### PRISE TELECOMMANDEE

- prise télécommandée additionnelle. portée 30 m. compatible avec S316-2 1000W

Type	Emb./Vpk.	⚡	Ref.	€
1000 watt	E	1	<b>S316-1 1000W</b>	15,30 pc/st

### STOPKONTAKT OP AFSTANDBEDIJING

- extra stopkontakt op afstandbediening bereik 30 m. kompatibel met S316-2 1000W



### PRISE TELECOMMANDEE

- prise télécommandée additionnelle. portée 30 m. compatible avec S316-2 1000W IP44

Type	Emb./Vpk.	⚡	Ref.	€
1000 watt	E	1	<b>L316-1 3600W</b>	25,95 pc/st

### STOPKONTAKT OP AFSTANDBEDIJING

- extra stopkontakt op afstandbediening bereik 30 m. kompatibel met S316-2 1000W IP44



3

### MULTIMETRE

- livré avec pile 9 volt

⚡	Ref.	€	Bebat
1	<b>ED061255</b>	14,24 pc/st	BEBAT_B

### MULTIMETER

- geleverd met batterij 9 volt



### MULTIMETRE

- livré avec pile 9 volt

⚡	Ref.	€	Bebat
1	<b>ED061265</b>	34,58 pc/st	BEBAT_B

### MULTIMETER

- geleverd met batterij 9 volt



**ADAPTATEUR CE****ADAPTATOR CE**

Type	Volt	☞	Ref.	€
16 Amp	230	15	<b>68216F</b>	10,55 pc/st

**DOMINO 3x2,5Amp****DOMINO 3x2,5Amp**

Type	☞	Ref.	€
3x2,5 Amp	10	<b>DOM</b>	2,181 pc/st

Type	Emb./Vpk.	☞	Ref.	€
3x2,5 Amp	E	10	<b>DOME</b>	2,479 pc/st

**DOMINO 2x16A.****DOMINO 2X16A.**

Type	Emb./Vpk.	☞	Ref.	€
2x16 Amp	E	10x10	<b>DOM02</b>	1,39 pc/st

**DOMINO+INTERRUPTEUR****DOMINO+SCHAKELAAR**

Type	Emb./Vpk.	☞	Ref.	€
2x16 Amp	E	10	<b>DOMI</b>	2,58 pc/st

**ALLONGE 2,5 Amp****VERLENGSNOER 2,5 Amp**

- H03 VHH2-F 2x0,75

- H03 VHH2-F 2x0,75

Type	☞	Ref.	€
2,5 M <input type="checkbox"/>	10	<b>RA2B</b>	3,03 pc/st
2,5 M <input checked="" type="checkbox"/>	10	<b>RA2N</b>	3,03 pc/st
5 M <input type="checkbox"/>	10	<b>RA5B</b>	4,56 pc/st
5 M <input checked="" type="checkbox"/>	10	<b>RA5N</b>	4,56 pc/st

Type	Emb./Vpk.	☞	Ref.	€
2,5 M <input type="checkbox"/>	E	10	<b>RA2BE</b>	3,33 pc/st
2,5 M <input checked="" type="checkbox"/>	E	10	<b>RA2NE</b>	3,33 pc/st
5 M <input type="checkbox"/>	E	10	<b>RA5BE</b>	4,86 pc/st
5 M <input checked="" type="checkbox"/>	E	10	<b>RA5NE</b>	4,86 pc/st



### ALLONGE BLANC

- H05VV-F 3x1,5

Type	Emb./Vpk.	⚡	Ref.	€
3 M	<input type="checkbox"/>	E	40 <b>RA3</b>	5,18 pc/st
5 M	<input type="checkbox"/>	E	20 <b>RA5</b>	7,77 pc/st
10 M	<input type="checkbox"/>	E	10 <b>RA10</b>	13,88 pc/st

### VERLENGKABEL

- H05VV-F 3x1,5



### ALLONGE 25 M

- H05VV-F 3x1,5

Type	Emb./Vpk.	⚡	Ref.	€
25 M	<input type="checkbox"/>	E	4 <b>RA25</b>	27,95 pc/st

### ORANJEVERLENGSNOER

- H05VV-F 3x1,5



### ALLONGE CAOUTCHOUC

- H07RN-F3x2,5

Type	Emb./Vpk.	⚡	Ref.	€
10 M	E	4	<b>RAC10</b>	33,55 pc/st
15 M	E	4	<b>RAC15</b>	46,73 pc/st
20 M	E	2	<b>RAC20</b>	61,58 pc/st

### RUBBERVERLENGSNOER

- H07RN-F3x2,5



### ALLONGE CAOUTCHOUC 3 PRISES

- H07RN-F3x2,5

Type	Emb./Vpk.	⚡	Ref.	€
10 M	E	4	<b>TRI10</b>	34,75 pc/st

### DOMINO RUBBERVERLENGSNOER

- H07RN-F3x2,5



### BLOC PRISE SANS CORDON

Type	Emb./Vpk.	⚡	Ref.	€
3x16 Amp	<input type="checkbox"/>	E	6 <b>BBS3</b>	3,6 pc/st
4x16 Amp	<input type="checkbox"/>	E	6 <b>BBS4</b>	5,1 pc/st

### TAFELCONTACT ZONDER SNOER



### BLOC PRISE SANS CORDON

Type	Emb./Vpk.	⚡	Ref.	€
4x16 Amp	<input type="checkbox"/>	E	6 <b>BCBS</b>	5,1 pc/st

### TAFELCONTACT ZONDER SNOER





### BLOC 3 PRISES

### 3 VOUDIGE STOPCONTACT



Type		Emb./Vpk.	⊗	Ref.	€
1,5 M	<input type="checkbox"/>	E	40	<b>BB3</b>	3,49 pc/st
3 M	<input type="checkbox"/>	E	20	<b>B3M</b>	5,21 pc/st

### BLOC 4 PRISES

### 4 VOUDIGE STOPCONTACT



Type		Emb./Vpk.	⊗	Ref.	€
1,5 M	<input type="checkbox"/>	E	40	<b>BB4</b>	3,87 pc/st
1,5 M	<input checked="" type="checkbox"/>	E	40	<b>BN4</b>	3,87 pc/st
3 M	<input type="checkbox"/>	E	20	<b>B4M</b>	5,54 pc/st
5 M	<input type="checkbox"/>	E	20	<b>B5M</b>	8,13 pc/st

### BLOC 3 PRISES+INTERRUPTEUR

### 3 VOUDIGE STOPCONTACT+SCHAKELAAR



Type		Emb./Vpk.	⊗	Ref.	€
1,5 M	<input type="checkbox"/>	E	40	<b>BBI3</b>	4,42 pc/st
1,5 M	<input checked="" type="checkbox"/>	E	40	<b>BNI3</b>	4,42 pc/st

### BLOC 4 PRISES+INTERRUPTEUR

### 4 VOUDIGE STOPCONTACT+SCHAKELAAR



Type		Emb./Vpk.	⊗	Ref.	€
3 M	<input checked="" type="checkbox"/>	E	20	<b>BNI4M</b>	6,26 pc/st

### BLOC 4 PRISES+INTERRUPTEUR

### 4 VOUDIGE STOPCONTACT+SCHAKELAAR



Type		Emb./Vpk.	⊗	Ref.	€
1,5 M	<input type="checkbox"/>	E	40	<b>BBI4</b>	4,65 pc/st

### MULTIPRISE

### TAFELCONTACT



Type		Emb./Vpk.	⊗	Ref.	€
6x16 Amp	<input checked="" type="checkbox"/>	E	6	<b>BI6</b>	14,83 pc/st
8x16 Amp	<input checked="" type="checkbox"/>	E	6	<b>BI8</b>	17,64 pc/st



### BLOC PRISES 5-11x16A.

### TAFELKONTAKT 5-11x16A.

Type	Emb./Vpk.	🔌	Ref.	€
5x16 Amp	E	1	<b>POBI5</b>	48,76 pc/st
7x16 Amp	E	1	<b>POBI7</b>	59,53 pc/st
9x16 Amp	E	1	<b>POBI9</b>	72,66 pc/st
11x16 Amp	E	1	<b>POBI11</b>	79,95 pc/st



### MUTIPRISE IP44

### TAFELCONTACT IP44

- H07RN-F 3x1,5

- H07RN-F 3x1,5

Type	Emb./Vpk.	🔌	Ref.	€
3 M	■	20	<b>BNI44</b>	13,97 pc/st



### ENROULEUR JARDIN

### TUINHASPEL 25M.

- H05VV-F 3x1,5

- H05VV-F 3x1,5

Type	🔌	Ref.	€
25 M	1	<b>JA25</b>	42,81 pc/st
50 M	1	<b>JA50</b>	60,98 pc/st



### ENROULEUR

### HASPEL

- H05VV-F 3x1,5

- H05VV-F 3x1,5

Type	🔌	Ref.	€
25 M	1	<b>RA425</b>	39,38 pc/st
40 M	1	<b>RA440</b>	58,08 pc/st



### ENROULEUR METALIQUE

### METAALHASPEL

- H07RN-F 3x2,5

- H07RN-F 3x2,5

Type	🔌	Ref.	€
40 M	1	<b>RAC440</b>	158,62 pc/st





### PROGRAMMATEUR

### STEKKERSCHAKELKLOK

Type	Volt	Emb./Vpk.	⌘	Ref.	€
16 Amp	230	E	15	<b>TF1</b>	5,6 pc/st



### FICHE PLATE MALE

### STEKKER

Type		⚡	Ref.	€
2,5 Amp.	□	50	<b>FPMB</b>	1,20 pc/st
2,5 Amp.	■	50	<b>FPMN</b>	1,20 pc/st

Type	Emb./Vpk.	⚡	Ref.	€
2,5 Amp.	□	10	<b>FPMBE</b>	1,72 pc/st
2,5 Amp.	■	10	<b>FPMNE</b>	1,72 pc/st



### FICHE PLATE FEMELLE

### KOPPELSTEKKER

Type		⚡	Ref.	€
2,5 Amp.	□	50	<b>FPFB</b>	1,42 pc/st
2,5 Amp.	■	50	<b>FPFN</b>	1,42 pc/st

Type	Emb./Vpk.	⚡	Ref.	€
2,5 Amp.	□	10	<b>FPFBE</b>	1,92 pc/st
2,5 Amp.	■	10	<b>FPFNE</b>	1,92 pc/st



### FICHE COUDEE

### HAAKSE STEKKER

Type		⚡	Ref.	€
10/16 Amp.	□	50	<b>FCOU</b>	1,63 pc/st

Type	Emb./Vpk.	⚡	Ref.	€
10/16 Amp.	□	10	<b>FCOUE</b>	1,93 pc/st



### FICHE POLYAMIDE

### POLYAMIDE STEKKER

Type		⚡	Ref.	€
10/16 Amp.	□	50	<b>FRMB</b>	1,32 pc/st
10/16 Amp.	■	50	<b>FRMN</b>	1,32 pc/st

Type	Emb./Vpk.	⚡	Ref.	€
10/16 Amp.	□	10	<b>FRMBE</b>	1,78 pc/st
10/16 Amp.	■	10	<b>FRMNE</b>	1,78 pc/st





### FICHE FEMELLE POLYAMIDE POLYAMIDE KOPPELSTEKKER

Type		⌘	Ref.	€
10/16 Amp.	□	25	FRFB	2,80 pc/st
10/16 Amp.	■	25	FRFN	2,80 pc/st

Type	Emb./Vpk.	⌘	Ref.	€
10/16 Amp.	□	E	FRFBE	3,25 pc/st
10/16 Amp.	■	E	FRFNE	3,25 pc/st



### FICHE PVC STEKKER PVC

Type		⌘	Ref.	€
10/16 Amp.	□	20	FRMB2	1,91 pc/st
10/16 Amp.	■	20	FRMG2	1,91 pc/st
10/16 Amp.	■	20	FRMN2	1,91 pc/st



Type	Emb./Vpk.	⌘	Ref.	€
10/16 Amp.	□	E	FRMB2E	2,44 pc/st
10/16 Amp.	■	E	FRMG2E	2,44 pc/st
10/16 Amp.	■	E	FRMN2E	2,44 pc/st

5



### FICHE FEMELLE PVC KOPPELSTEKKER PVC

Type		⌘	Ref.	€
10/16 Amp.	□	20	FRFB2	4,73 pc/st
10/16 Amp.	■	20	FRFG2	4,73 pc/st
10/16 Amp.	■	20	FRFN2	4,73 pc/st

Type	Emb./Vpk.	⌘	Ref.	€
10/16 Amp.	□	E	FRFB2E	5,26 pc/st
10/16 Amp.	■	E	FRFG2E	5,26 pc/st
10/16 Amp.	■	E	FRFN2E	5,26 pc/st



### FICHE CAOUTCHOUC RUBERSTEKKER

Type	Emb./Vpk.	⌘	Ref.	€
10/16 Amp.	E	20x5	FCM	1,74 pc/st



### FICHE FEMELLE CAOUTCHOUC

### RUBERKOPPELSTEKKER

Type	Emb./Vpk.	⚡	Ref.	€
10/16 Amp.	E	20x5	<b>FCF</b>	2,86 pc/st



### FICHE + INTER.BLANC

### STEKKER +

- fiche avec interrupteur bipolaire.

- stekker met tweepolig schakelaar.

Type	Emb./Vpk.	⚡	Ref.	€
10/16 Amp.		10	<b>FIN</b>	4,32 pc/st



Type	Emb./Vpk.	⚡	Ref.	€
10/16 Amp.	E	10	<b>FINE</b>	4,78 pc/st

### CABLE HI-FI

### HIFIKABEL

Type	⚡	Ref.	€
2x0,75 MM²	100 M.	<b>HIFI</b>	0,46 m/m
2x1,50 MM²	100 M.	<b>HIFI215</b>	0,84 m/m
2x2,50 MM²	100 M.	<b>HIFI225</b>	1,42 m/m



### VTLBp 2x0.75

### VTLBp 2x0.75

Type	□	⚡	Ref.	€
H03VHH-2F	□	100 M.	<b>KF275</b>	0,47 m/m
H03VHH-2F	■	100 M.	<b>KF275N</b>	0,47 m/m



### VTLB 3G0,75

### VTLB 3G0,75

Type	□	⚡	Ref.	€
H03VV-F	□	100 M.	<b>K375</b>	0,76 m/m
H03VV-F	■	100 M.	<b>K375N</b>	0,76 m/m



### VTMB 3G1,5

### VTMB 3G1,5

Type	□	⚡	Ref.	€
H05VV-F	□	100 M.	<b>K315</b>	1,29 m/m



5



### COUPEAU A DEMANTELER ONTMANTELINGSMES

Type	Emb./Vpk.	🌀	Ref.	€
Ø 8 mm > 28 mm	E	1	JO28	15,18 pc/st



### COUPEAU A DEMANTELER ONTMANTELINGSMES

- dénudage de fils 0,2 - 4 mm<sup>2</sup> - ontbloten van draden 0,2 - 4 mm<sup>2</sup>

Type	Emb./Vpk.	🌀	Ref.	€
Ø 8 mm > 13 mm	E	1	JO15	32,89 pc/st



### PINCE A DENUDER STRIPTANG

Type	Emb./Vpk.	🌀	Ref.	€
0,2 > 6 mm <sup>2</sup>	E	1	JO4	27,06 pc/st



### CABLE SPIRALE SPIRAALKABEL

- H03VV-F 3G0,75 - H03VV-F 3G0,75

Type	Emb./Vpk.	🌀	Ref.	€
5 M.	□	15	SPI2013	7,15 pc/st
5 M.	■	15	SPI2013N	7,15 pc/st



### CORDON SNOER

- H03VVH2-F 2x0,75 - H03VVH2-F 2x0,75

Type	Emb./Vpk.	🌀	Ref.	€
2 M.	■	10	CN20SP	2,43 pc/st

Type	Emb./Vpk.	🌀	Ref.	€
2 M.	■	E	CN20SE	2,88 pc/st



### CORDON AVEC INTERRUPTEUR SNOER MET SCHAKELAAR

Type	Coloris	Kleur	🌀	Ref.	€	
2 M.	blanc	□	wit	10	CORB	3,11 pc/st
2 M.	noir	■	zwart	10	CORN	3,11 pc/st
2 M.	or	■	goud	10	CORO	3,33 pc/st

Type	Coloris	Kleur	Emb./Vpk.	🌀	Ref.	€	
2 M.	blanc	□	wit	E	10	CORBE	3,56 pc/st
2 M.	noir	■	zwart	E	10	CORNE	3,56 pc/st
2 M.	or	■	goud	E	10	COROE	3,78 pc/st



### CORDON D'ALIMENTATION RADIO

### RADIOSNOER

Type		Ref.	€
1,5 M.		CORR	2,2 pc/st

Type	Emb./Vpk.	Ref.	€
1,5 M.	E	CORRE	2,2 pc/st



### CORDON D'ALIMENTATION VOEDINGSNOER

### VOEDINGSNOER

Type		Ref.	€
1,8 M.		CORA	2,94 pc/st
3 M.		CORA3	4,96 pc/st

Type	Emb./Vpk.	Ref.	€
1,8 M.	E	CORAE	3,26 pc/st
3 M.	E	CORA3E	5,28 pc/st



### CORDON D'ALIMENTATION TOESTELSNOER

### TOESTELSNOER

Type		Ref.	€
1,8 M.		COCO	2,57 pc/st

Type	Emb./Vpk.	Ref.	€
1,8 M.	E	COCOE	2,87 pc/st



### RACCORDS SANS VIS

### STEEKKLEM

- section de cable 1 à 2,5 mm²

- kabelsectie 1 a 2,5 mm²

Type		Ref.	€
3 bornes/voudig		WA3	0,15 pc/st
5 bornes/voudig		WA5	0,175 pc/st
5 bornes/voudig		10x100 WA51	0,15 pc/st
5 bornes/voudig		20x100 WA52	0,14 pc/st

Type	Emb./Vpk.	Ref.	€
3 bornes/voudig	E	WA10	1,84/10 pc/st
3 bornes/voudig	E	WA350	7,7/50 pc/st
5 bornes/voudig	E	WA8	1,71/8 pc/st
5 bornes/voudig	E	WA50	8,16/50 pc/st

**Kleinhuis**



### RACCORDS SANS VIS

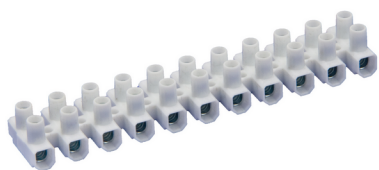
### STEEKKLEM

- section de cable 2,5 à 6 mm²

- kabelsectie 2,5 a 6 mm²

Type		Ref.	€
3 poles/n		WA773173	0,433 pc/st





### BORNE RAPIDE POUR MULTIBRIN

- borne pour fil souple et rigide
- 0,08-4 mm<sup>2</sup> en fil souple
- 0,08-2,5 mm<sup>2</sup> en fil rigide

Type	⌘	Ref.	€
2 poles/n	100	<b>WA222412</b>	0,302 pc/st
3 poles/n	50	<b>WA222413</b>	0,374 pc/st
5 poles/n	40	<b>WA222415</b>	0,602 pc/st

Type	Emb./Vpk.	⌘	Ref.	€
2 poles/n	E	10	<b>WA12</b>	4,35/10 pc/st
3 poles/n	E	10	<b>WA13</b>	3,60/8 pc/st
5 poles/n	E	10	<b>WA15</b>	4,28/6 pc/st

### STEEKKLEM VOOR MEERADERIGE GELEIDERS

- klem voor soepele en massieve geleiders
- 0,08-4 mm<sup>2</sup> met soepele geleider
- 0,08-2,5 mm<sup>2</sup> met massieve geleider

### RACCORD LUSTRE

Type	⌘	Ref.	€
1-2,5 MM <sup>2</sup>	100	<b>WA224101</b>	0,197 pc/st

Type	Emb./Vpk.	⌘	Ref.	€
1-2,5 MM <sup>2</sup>	E	10	<b>WA6</b>	2,281/6 pc/st

### LUSTERSTEEKKLEM

### BORNE PORCELEINE

Type	⌘	Ref.	€
2x6 MM <sup>2</sup>	100	<b>SU2</b>	0,68 pc/st
3x6 MM <sup>2</sup>	100	<b>SU3</b>	0,86 pc/st

Type	Emb./Vpk.	⌘	Ref.	€
2x6 MM <sup>2</sup>	E	10	<b>SU2E</b>	2,36/3 pc/st
3x6 MM <sup>2</sup>	E	10	<b>SU3E</b>	2,01/2 pc/st

### LUSTERKLEM PORCELEIN

### BARRETTE A BORNES

Type	⌘	Ref.	€
2,5 MM <sup>2</sup>	10	<b>SU25</b>	0,49 pc/st
6 MM <sup>2</sup>	10	<b>SU6</b>	0,59 pc/st
10 MM <sup>2</sup>	10	<b>SU10</b>	0,94 pc/st
16 MM <sup>2</sup>	10	<b>SU16</b>	1,59 pc/st

Type	Emb./Vpk.	⌘	Ref.	€
2,5 MM <sup>2</sup>	E	10	<b>SU25E</b>	1,29/2 pc/st
6 MM <sup>2</sup>	E	10	<b>SU6E</b>	1,49/2 pc/st
10 MM <sup>2</sup>	E	10	<b>SU10E</b>	2,18/2 pc/st
16 MM <sup>2</sup>	E	10	<b>SU16E</b>	3,47/2 pc/st

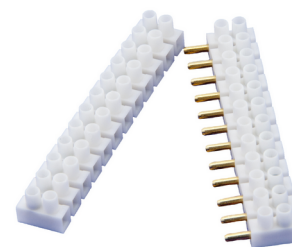
### STEKKERKLEM



### BARRETTE EMBROCHABLE      STEEKLUSTERKLEM

Type	🔗	Ref.	€
2,5 MM <sup>2</sup>	10	<b>SUB</b>	4,17 pc/st

Type	Emb./Vpk.	🔗	Ref.	€
2,5 MM <sup>2</sup>	E	10	<b>SUBE</b>	4,57 pc/st



### BORNE POLYCARBONATE      POLYCARBONAT KLEM

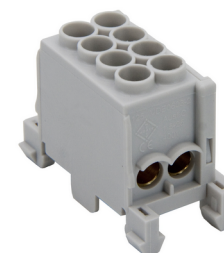
Type	🔗	Ref.	€
2,5 MM <sup>2</sup>	20	<b>1525</b>	1,65 pc/st
6 MM <sup>2</sup>	20	<b>1527</b>	2,45 pc/st
10 MM <sup>2</sup>	12	<b>1529</b>	4,30 pc/st
16 MM <sup>2</sup>	4	<b>1530</b>	8,23 pc/st

Type	Emb./Vpk.	🔗	Ref.	€
2,5 MM <sup>2</sup>	E	10	<b>1525E</b>	1,98 pc/st
6 MM <sup>2</sup>	E	10	<b>1527E</b>	2,75 pc/st
10 MM <sup>2</sup>	E	10	<b>1529E</b>	4,60 pc/st
16 MM <sup>2</sup>	E	10	<b>1530E</b>	8,53 pc/st



### BORNE JUXTAPOSABLE      HOOFDGELEIDERKLEM

Type	🔗	Ref.	€
4x25 MM <sup>2</sup>	10	<b>BOR25</b>	2,92 pc/st



### TAPE 10M X 19MM.      TAPE 10M X 19MM. ROT

Type	🔗	Ref.	€
10M X 19MM.      ■	10	<b>TAPEN</b>	0,69 pc/st
10M X 19MM.      ■	10	<b>TAPERO</b>	0,69 pc/st
10M X 19MM.      □	10	<b>TAPEW</b>	0,69 pc/st
10M X 19MM.      ■	10	<b>TAPEG</b>	0,69 pc/st
10M X 19MM.      ■	10	<b>TAPEBL</b>	0,69 pc/st
10M X 19MM.      ■	10	<b>TAPEVJ</b>	0,69 pc/st



### DOUILLE SANS VIS      FIT ZONDER SCROEF

Type	🔗	Ref.	€
E27	500	<b>D57</b>	0,72 pc/st

Type	Emb./Vpk.	🔗	Ref.	€
E27	E	10	<b>D57E</b>	1,69/2 pc/st





### DOUILLE SANS VIS

### FIT ZONDER SCROEF



Type	🌀	Ref.	€
E27	500	D57N	0,72 pc/st

### DOUILLE LISSE E27

### GLADDE FIT



Type	Coloris	Kleur	🌀	Ref.	€	
E27	■		50	D27N	0,94 pc/st	
E27	■		100	D27N1	0,84 pc/st	
E27	□		50	D27B	1,08 pc/st	
E27	□		100	D27B1	0,98 pc/st	
E27	laiton	■	messsing	50	D27L	4,1 pc/st

Type	Coloris	Kleur	Emb./Vp🌀	Ref.	€	
E27	■		E 10	D27NE	2,19/2 pc/st	
E27	□		E 10	D27BE	2,36/2 pc/st	
E27	laiton	■	messsing E	10	D27LE	4,4 pc/st

### DOUILLE DEMI-FILETEE

### HALFDRAAD FIT



Type	🌀	Ref.	€	
E27	□	50	D27DFB	1,31 pc/st
E27	■	50	D27DFN	1,06 pc/st

Type	Emb./Vpk.	🌀	Ref.	€
E27	□ E	10	D27DFBE	1,98 pc/st
E27	■ E	10	D27DFNE	1,68 pc/st

### DOUILLE FILETEE

### DRAAD FIT



Type	Coloris	Kleur	🌀	Ref.	€	
E27	■		50	D27FN	1,08 pc/st	
E27	□		50	D27FB	1,31 pc/st	
E27	laiton	■	messing	50	D27FL	4,1 pc/st

Type	Coloris	Kleur	Emb./Vp🌀	Ref.	€	
E27	■		E 10	D27FNE	1,44 pc/st	
E27	□		E 10	D27FBE	1,65 pc/st	
E27	laiton	■	messing E	10	D27FLE	4,4 pc/st

### DOUILLE PORCELAIN

### PORCELEIN FITTING



- nipple M10

- nippel M10

Type	🌀	Ref.	€
E27	50	DPOR	3,28 pc/st

Type	Emb./Vpk.	🌀	Ref.	€
E27	E	10	DPORE	3,64 pc/st



### DOUILLE LISSE E14

### FITTING GLAD

Type	Coloris	Kleur	⚡	Ref.	€	
E14	■		100	<b>D14N</b>	0,82 pc/st	
E14	□		100	<b>D14B</b>	1,09 pc/st	
E14	laiton	■	messing	50	<b>D14L</b>	3,65 pc/st

Type	Coloris	Kleur	Emb./Vp ⚡	Ref.	€
E14	■		E 10	<b>D14NE</b>	1,21 pc/st
E14	□		E 10	<b>D14BE</b>	1,52 pc/st
E14	laiton	■	messing E 10	<b>D14LE</b>	4,05 pc/st



### DOUILLE FILETEE

### FITTING DRAAD

Type	Coloris	Kleur	⚡	Ref.	€	
E14	■		100	<b>D14FN</b>	1,01 pc/st	
E14	□		100	<b>D14FB</b>	1,18 pc/st	
E14	laiton	■	messing	50	<b>D14L</b>	3,65 pc/st

Type	Coloris	Kleur	Emb./Vp ⚡	Ref.	€
E14	■		E 10	<b>D14FNE</b>	1,41 pc/st
E14	□		E 10	<b>D14FBE</b>	1,58 pc/st
E14	laiton	■	messing E 10	<b>D14FLE</b>	4,05 pc/st



### BAGUE

### RING

Type	Coloris	Kleur	⚡	Ref.	€	
E27	■		100	<b>DB27N</b>	0,19 pc/st	
E27	□		100	<b>DB27B</b>	0,24 pc/st	
E27	laiton	■	messing	50	<b>DB27L</b>	0,49 pc/st
E14	■		100	<b>DB14N</b>	0,16 pc/st	
E14	□		100	<b>DB14B</b>	0,22 pc/st	
E14	laiton	■	messing	50	<b>DB14L</b>	0,49 pc/st

Type	Coloris	Kleur	Emb./Vp ⚡	Ref.	€
E27	■		E 10	<b>DB27NE</b>	0,69/2 pc/st
E27	□		E 10	<b>DB27BE</b>	0,81/2 pc/st
E14	■		E 10	<b>DB14NE</b>	0,64/2 pc/st
E14	□		E 10	<b>DB14BE</b>	0,77/2 pc/st
E14	laiton	■	messing E 10	<b>DB14LE</b>	1,4/2 pc/st
E27	laiton	■	messing E 10	<b>DB27LE</b>	1,4/2 pc/st



### DOUILLE BOUGIE E14

### KAARSENFITTING E14

Type	⚡	Ref.	€
100 MM.	50	<b>DSB</b>	0,99 pc/st
95a120 MM.	50	<b>DES</b>	1,76 pc/st

Type	Emb./Vpk.	⚡	Ref.	€
100 MM.	E	10	<b>DSBE</b>	2,44/2 pc/st
95a120 MM.	E	10	<b>DSEE</b>	3,94/2 pc/st





### FOURREAU

- hauteur 100 mm.  
Ø 22,5 mm.

Type	Coloris	Kleur	⌘	Ref.	€
pvc	antique	antiek	10	<b>D14A</b>	0,48 pc/st
pvc	blanc	wit	10	<b>D14I</b>	0,4 pc/st
carton/karton	blanc ombré	wit+schaduwzi	10	<b>D14C</b>	1,84 pc/st

Type	Coloris	Kleur	Emb./Vpk	⌘	Ref.	€
pvc	antique	antiek	E	10	<b>D14AE</b>	1,3/2 pc/st
pvc	blanc	wit	E	10	<b>D14IE</b>	1,12/2 pc/st
carton/kart	blanc ombré	wit+schaduw	E	10	<b>D14CE</b>	4,18/2 pc/st

### KAARS

- hoogte 100 mm.  
Ø 22,5 mm.

### NIPPLE M10x1



Type	⌘	Ref.	€
40 MM.	10	<b>D40</b>	0,15 pc/st
100 MM.	10	<b>D100</b>	0,41 pc/st
1000 MM.	1	<b>D1000</b>	2,96 pc/st

Type	Emb./Vpk.	⌘	Ref.	€
40 MM(4x)+8 écrou+moer	E	10	<b>D40E</b>	1,42/4+8 pc/st
100 MM.	E	10	<b>D100E</b>	1,23/2 pc/st

### NIPPEL M10x1

### ECROU M10x1



Type	⌘	Ref.	€
M10x1	100	<b>DEC</b>	0,11 pc/st

### MOER M10x1

### NIPPLE PLATEAU



Type	⌘	Ref.	€
M10	10	<b>DNP</b>	0,64 pc/st

Type	Emb./Vpk.	⌘	Ref.	€
M10	E	10	<b>DNPE</b>	2,86/4 pc/st

### PLAATNIPPEL

### NIPPLE ANNEAU



Type	⌘	Ref.	€
M10	10	<b>DAN</b>	1,32 pc/st

Type	Emb./Vpk.	⌘	Ref.	€
M10	E	10	<b>DANE</b>	1,67 pc/st

### RINGNIPPEL



### CORDON DE TIRAGE.

### CORDON DE TIRAGE.

Type	🌀	Ref.	€
2 M.	100	<b>TIR</b>	1,12 pc/st

Type	Emb./Vpk.	🌀	Ref.	€
2 M.	E	10	<b>TIRE</b>	1,62 pc/st



### INTERRUPTEUR DE PASSAGE

### SNOERSCHAKELAAR

Type	🌀	Ref.	€
unipolaire/eenpolig <input type="checkbox"/>	100	<b>IPBL</b>	1,42 pc/st
unipolaire/eenpolig <input checked="" type="checkbox"/>	100	<b>IPN</b>	1,42 pc/st
unipolaire/eenpolig <input type="checkbox"/>	100	<b>IPBR</b>	1,42 pc/st

Type	Emb./Vpk.	🌀	Ref.	€
unipolaire/eenpc <input type="checkbox"/>	E	10	<b>IPBLE</b>	1,82 pc/st
unipolaire/eenpc <input checked="" type="checkbox"/>	E	10	<b>IPNE</b>	1,82 pc/st
unipolaire/eenpc <input type="checkbox"/>	E	10	<b>IPBRE</b>	1,82 pc/st



### INTERRUPTEUR DE PASSAGE

### SNOERSCHAKELAAR

Type	🌀	Ref.	€
bipolaire/tweepolig <input type="checkbox"/>	100	<b>IP2BL</b>	1,83 pc/st
bipolaire/tweepolig <input checked="" type="checkbox"/>	100	<b>IP2N</b>	1,83 pc/st

Type	Emb./Vpk.	🌀	Ref.	€
bipolaire/tweepc <input type="checkbox"/>	E	10	<b>IP2BLE</b>	2,13 pc/st
bipolaire/tweepc <input checked="" type="checkbox"/>	E	10	<b>IP2NE</b>	2,13 pc/st



### INTERRUPTEUR POUSSOIR

### DRUKSKAKELAAR

Volt	🌀	Ref.	€
230	10	<b>I2A</b>	0,79 pc/st

Volt	Emb./Vpk.	🌀	Ref.	€
230	E	10	<b>I2AE</b>	1,94/2 pc/st



### INTERRUPTEUR TIRETTE.

### TREKSKAKELAAR.

Type	🌀	Ref.	€
2 Amp 250Volt	10	<b>ITIR</b>	1,24 pc/st

Type	Emb./Vpk.	🌀	Ref.	€
2 Amp 250Volt	E	10	<b>ITIRE</b>	1,64 pc/st





### INTERRUPTEUR LUMINEUX LICHTSCHAKELAAR

- dimensions d'encastrement:28x21mm. - inbouw afmeeting:28x21mm.

Type	Volt		⌘	Ref.	€
BIPOLAIRE /TWEEPOLIG	230		10	<b>M395</b>	1,42 pc/st

Type	Volt	Emb./Vpk.	⌘	Ref.	€
BIPOLAIRE /TWEEPOLIG	230	E	10	<b>M395E</b>	1,82 pc/st



### INTERRUPTEUR A BASCULE WIPSCHAKELAAR

- dimension d'encastrement: dia 10mm. - inbouw afmeeting: dia 10mm.

Type	Volt		⌘	Ref.	€
unipolaire/enkelpolig	250		10	<b>ITO</b>	1,18 pc/st

Type	Volt	Emb./Vpk.	⌘	Ref.	€
unipolaire/enke250		E	10	<b>ITOE</b>	1,58 pc/st



### LAMPE TEMOIN PILOTLICHT

- Ø 10 mm. - Ø 10 mm.

Volt			⌘	Ref.	€
230	■		10	<b>M72R</b>	1,07 pc/st

Volt		Emb./Vpk.	⌘	Ref.	€
230	■	E	10	<b>M72RE</b>	1,47 pc/st



### INTERRUPTEUR A PIEP VOETSCHAKELAAR

			⌘	Ref.	€
□			10	<b>IPIB</b>	2,66 pc/st
■			10	<b>IPIN</b>	2,66 pc/st
■			10	<b>IPIO</b>	2,66 pc/st

	Emb./Vpk.		⌘	Ref.	€
□	E		10	<b>IPIBE</b>	3,06 pc/st
■	E		10	<b>IPINE</b>	3,06 pc/st
■	E		10	<b>IPIOE</b>	3,06 pc/st



### DIMMER A PIED VOETDIMMER

Type	Volt		⌘	Ref.	€
500 Watt	230	■	1	<b>RT81</b>	13,25 pc/st

Type	Volt	Emb./Vpk.	⌘	Ref.	€
5	230	■	E	<b>RT81NE</b>	13,6 pc/st



**DIMMER A VOETDIMMER+SCHAKELAAR**  
**PIED+INTERRUPTEUR**

Type	Volt	Emb./Vpk.	Ref.	€
500 Watt	230	E	1 RONE	18,25 pc/st



**SOCKET E10. FITTING E10.**

Type	Volt	Emb./Vpk.	Ref.	€
E10	12	10	SOE10	0,91 pc/st

Type	Volt	Emb./Vpk.	Ref.	€
E10	12	E	10 SOE10E	2,14/2 pc/st



**SOCKET HALOGENE HALOGEENFITTING**

- fil de 25 cm. - draadlengt 25 cm.

Type	Emb./Vpk.	Ref.	€
G4-G5,3-G6,35	50	HASO	1,32 pc/st

Type	Emb./Vpk.	Ref.	€
G4-G5,3-G6,35	E	10 HASOE	2,93/2 pc/st



**SOCKET HALOGENE GZ10 HALOGEENFITTING GZ10**

Type	Volt	Emb./Vpk.	Ref.	€
25 CM de fil/draad	230	10x100	HAG25	0,79 pc/st
borne	230	100	HAGU	1,28 pc/st
rapide/steekklem				

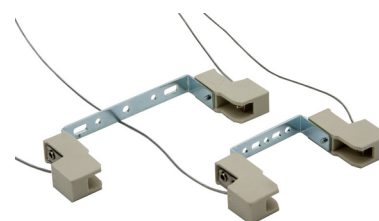
Type	Volt	Emb./Vpk.	Ref.	€
25 CM de fil/draad	230	E	10 HAG25E	1,94/2 pc/st
borne	230	E	10 HAGUE	2,86/2 pc/st
rapide/steekkle				



**SOCQUET POUR TUBE HALOGENE HALOGEENFITTING**

Type	Emb./Vpk.	Ref.	€
78 MM.	10	A02	3,23 pc/st
118 MM.	10	A03	3,23 pc/st

Type	Emb./Vpk.	Ref.	€
78 MM.	E	10 A02E	3,73 pc/st
118 MM.	E	10 A03E	3,73 pc/st



5



### VERRE DE PROTECTION POUR HALOGEN.

### BESCHERMING HALOGLAS

Type	⊗	Ref.	€
74 MM.	10	<b>TU08</b>	3,28 pc/st
114 MM.	10	<b>TU10</b>	3,28 pc/st

Type	Emb./Vpk.	⊗	Ref.	€
74 MM.	E	10	<b>TU08E</b>	3,68 pc/st
114 MM.	E	10	<b>TU10E</b>	3,68 pc/st