



TRUHLÁŘ & spol., v.o.s.

LIGHT ANCHORS and FIXING SYSTEMS

www.truhlarapol.com

Company **TRUHLÁŘ a spol., v.o.s.** was founded in 1990 and began trade activity with jointing materials.

The company has been expanding gradually and adding new retail outlets in the areas of hardware and electrical appliances to its existing chain of retail shops.

However, the company has remained committed to its original domain and has continued to improve and expand its wholesale business in the line of dowels, anchoring techniques and jointing materials.



In 1993 the company launched its own production of metallic elements for anchoring technology.

A basic change in the development of the company was made with manufacture of wide assortment of plastic dowels that started in the beginning of year 2000.

Thanks using one of the most up-to-date technologies and high-grade materials, our products are comparable with the products offered by well-known competitors on our market.

At the same time, we have been stabilizing and expanding the assortment of metallic anchoring elements, fixing elements for gypsum board and multipurpose screws.

In August 2003 was finished construction of new logistic and distribution centre in Hlubočinka – 15 km from Prague. Moving to new spaces near the production and packing factory have shorted delivery terms and improved customer service.



Stock with capacity up to 1.800 pallet places, modern offices and retail store help to satisfy all our and our customer's needs.



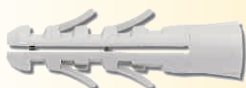
During beginning of year 2006 will be finished new production and assembling factory that will be directly connected to our current distribution centre. This step will greatly speed up our production time and make us more flexible.

Part of new production factory will be also new stock places with capacity up to 600 pallets.

Thanks the new production factory we will be able better and faster fulfill your demands.

Standard Anchors (Polyamide)

UPA



Lightweight all-purpose fixing for professional and DIY use. High quality Polyamide for optimal performance and easy application.

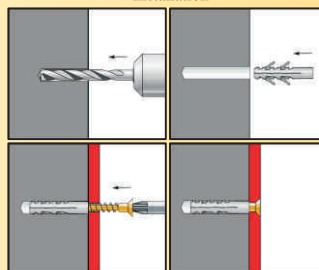
Application:

- concrete
- brick
- natural stone
- sand-stone

Advantages:

- wide area of application
- high temperature resistance

Installation



Material: Polyamide PA6 (Nylon)

Type UPA - Technical data and price

Size	Drill Ø	Minimal drill depth	Anchor lenght	Screw Ø	Recommended loads	Basic price / 100 pcs	
						box	bulk
4 x 20	4	25	20	2 - 3	0,13	0,54 €	0,43 €
5 x 25	5	30	25	2,5 - 4	0,32	0,57 €	0,50 €
6 x 30	6	35	30	3,5 - 5	0,53	0,61 €	0,53 €
7 x 35	7	40	35	4 - 5,5	0,65	0,90 €	0,70 €
8 x 40	8	45	40	4,5 - 6	0,75	1,23 €	1,03 €
10 x 50	10	55	50	6 - 8	0,92	2,33 €	1,93 €
10 x 60	10	65	60	6 - 8	0,92	2,60 €	2,20 €
12 x 60	12	65	60	8 - 10	1,33	4,10 €	3,30 €
14 x 75	14	80	75	10 - 12	1,76	6,47 €	5,47 €
16 x 90	16	95	90	12	2,90	13,30 €	11,33 €
16 x 100	16	105	100	12	2,90	13,80 €	11,80 €
16 x 120	16	125	120	12	2,90	14,80 €	12,80 €
16 x 140	16	145	140	12	2,90	15,80 €	13,80 €

All figures are in mm

Recommended loads in kN
(1 kN \approx 100 Kg)

Standard Anchors with lip (Polyamide) UPA/L



Lightweight all-purpose fixing for professional and DIY use. High quality Polyamide for optimal performance and easy application.

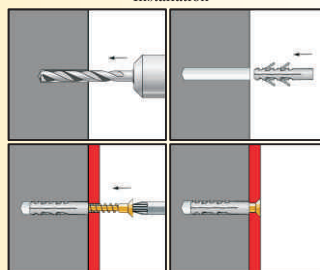
Application:

- concrete
- brick
- natural stone
- sand-stone

Advantages:

- wide area of application
- high temperature resistance

Installation



Material: Polyamide PA6 (Nylon)

Type UPA/L - Technical data and price

Size	Drill \varnothing	Minimal drill depth	Anchor length	Screw \varnothing	Recommended loads	Basic price / 100 pcs	
						box	bulk
5 x 25	5	30	25	2,5 - 4	0,32	0,57 €	0,50 €
6 x 30	6	35	30	3,5 - 5	0,53	0,61 €	0,53 €
7 x 35	7	40	35	4 - 5,5	0,65	0,90 €	0,70 €
8 x 40	8	45	40	4,5 - 6	0,75	1,23 €	1,03 €
10 x 50	10	55	50	6 - 8	0,92	2,33 €	1,93 €
10 x 60	10	65	60	6 - 8	0,92	2,60 €	2,20 €
12 x 60	12	65	60	8 - 10	1,33	4,10 €	3,30 €
14 x 75	14	80	75	10 - 12	1,76	6,47 €	5,47 €
16 x 90	16	95	90	12	2,90	13,30 €	11,33 €

All figures are in mm

Recommended loads in kN
(1 kN \cong 100 Kg)

Standard Anchors for cable ties (Polyamide) UPA-LP



Lightweight all-purpose fixing for professional and DIY use. High quality Polyamide for optimal performance and easy application.

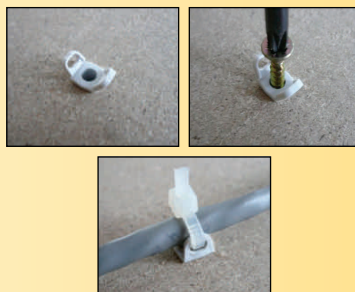
Application:

- concrete
- brick
- natural stone
- sand-stone

Advantages

- wide area of application
- high temperature resistance

Installation



Material: Polyamide PA6 (Nylon)

Type UPA-LP - Technical data and price

Size	Drill Ø	Minimal drill depth	Anchor lenght	Screw Ø	Recommended loads	Basic price / 100 pcs	
						box	bulk
5 x 25	5	30	25	2,5 - 4	0,32	0,92 €	0,85 €
6 x 30	6	35	30	3,5 - 5	0,53	1,00 €	0,93 €
8 x 40	8	45	40	4,5 - 6	0,75	1,85 €	1,62 €

All figures are in mm

Recommended loads in kN
(1 kN \cong 100 Kg)

Standard Anchors (Polypropylene) UPP



Lightweight all-purpose fixing for professional and DIY use.
High quality Polypropylene for optimal performance and easy application.

Application:

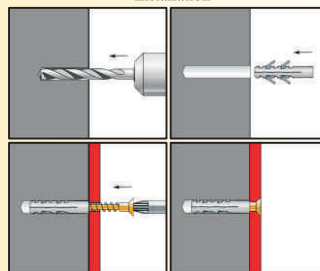
- concrete
- brick
- natural stone
- sand-stone

Advantages:

- wide area of application
- high temperature resistance
- low price

Material: Polypropylene

Installation



Type UPP - Technical data and price

Size	Drill \varnothing	Minimal drill depth	Anchor length	Screw \varnothing	Recommended loads	Basic price / 100 pcs	
						box	bulk
4 x 20	4	25	20	2 - 3	0,10	0,41 €	0,30 €
5 x 25	5	30	25	2,5 - 4	0,26	0,44 €	0,37 €
6 x 30	6	35	30	3,5 - 5	0,42	0,51 €	0,40 €
7 x 35	7	40	35	4 - 5,5	0,52	0,70 €	0,50 €
8 x 40	8	45	40	4,5 - 6	0,60	0,80 €	0,60 €
10 x 50	10	55	50	6 - 8	0,74	1,97 €	1,57 €
10 x 60	10	65	60	6 - 8	0,74	2,03 €	1,63 €
12 x 60	12	65	60	8 - 10	1,06	3,43 €	2,63 €
14 x 75	14	80	75	10 - 12	1,41	5,13 €	4,13 €
16 x 90	16	95	90	12	2,32	12,00 €	10,00 €
16 x 100	16	105	100	12	2,32	12,50 €	10,50 €
16 x 120	16	125	120	12	2,32	13,30 €	11,40 €
16 x 140	16	145	140	12	2,32	14,10 €	12,30 €

All figures are in mm

Recommended loads in kN
(1 kN \cong 100 Kg)

Universal Anchors (Polyamide) TX-PA



Plug for universal use made of Polyamide PA6 (TX-PA). It is held through internal pressure against the inside of the hole into solid materials and it is held in place by segments knotting behind the drill hole into the cavity.

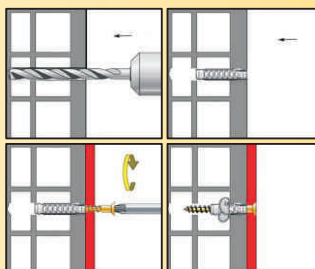
Application:

- hollow or full brick
- gas concrete
- concrete
- sand-stone
- chipboard
- gypsum plasterboard

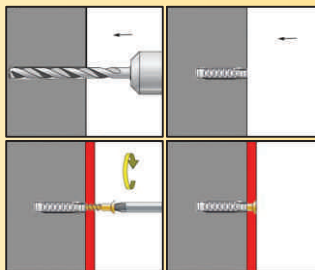
Advantages:

- high quality
- fast installation
- strong anchoring
- usage in many materials

Installation hollow material



Installation full material



Material: Polyamide PA6 (Nylon)

Type TX-PA - Technical data and price

Size	Drill \varnothing	Minimal drill depth	Anchor length	Screw \varnothing	Recommended loads	Basic price / 100 pcs	
						box	bulk
5 x 25	5	35	25	3 - 4	0,60	1,19 €	1,08 €
6 x 30	6	40	30	4 - 5	0,70	1,62 €	1,50 €
8 x 40	8	50	40	4,5 - 6	1,10	2,46 €	2,27 €
10 x 50	10	70	50	6 - 8	1,50	4,42 €	4,04 €
12 x 60	12	80	60	8 - 10	1,70	6,89 €	6,12 €

All figures are in mm

Diameter 12 mm is not recommended to use in hollow materials

Recommended loads in kN

(1 kN \approx 100 Kg)

Universal Anchors (Polypropylene) TX-PP



Plug for universal use made of Polypropylene (TX-PP). It is held through internal pressure against the inside of the hole into solid materials and it is held in place by segments knotting behind the drill hole into the cavity.

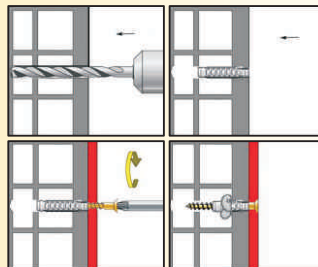
Application:

- hollow or full brick
- gas concrete
- concrete
- sand-stone
- chipboard
- gypsum plasterboard

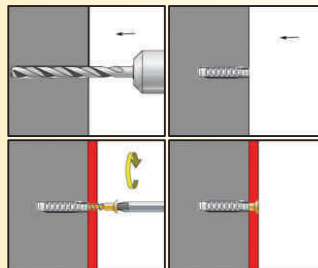
Advantages:

- high quality
- fast installation
- low price
- usage in many materials

Installation hollow material



Installation full material



Material: Polypropylene

Type TX-PP - Technical data and price

Size	Drill \varnothing	Minimal drill depth	Anchor length	Screw \varnothing	Recommended loads	Basic price / 100 pcs	
						box	bulk
5 x 25	5	35	25	3 - 4	0,42	1,04 €	0,94 €
6 x 30	6	40	30	4 - 5	0,49	1,39 €	1,27 €
8 x 40	8	50	40	4,5 - 6	0,77	2,12 €	1,94 €
10 x 50	10	70	50	6 - 8	1,05	3,65 €	3,27 €
12 x 60	12	80	60	8 - 10	1,19	5,73 €	4,96 €

All figures are in mm

Diameter 12 mm is not recommended to use in hollow materials

Recommended loads in kN

(1 kN \approx 100 Kg)

Nail Anchors NH, NHZ, NHH



NH – round head



NHZ – countersunk head



NHH – mushroom head

These plugs can be used for quick installation in internal and external construction work. Recommended where a rapid and large numbers of fixing are required.

These plugs are available with round, countersunk and mushroom head.

Application:

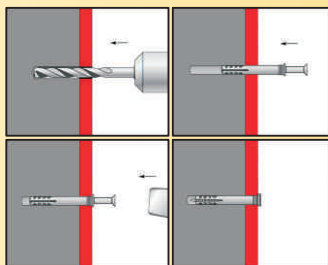
- concrete
- stone
- sand-stone

Advantages:

- fast and easy installation
- dismantling option

Material: Polyamide PA6 (Nylon)

Installation



Type NH, NHZ and NHH – Technical data and price

Size	Drill \varnothing	Minimal drill depth	Anchor length	Screw \varnothing	Collar \varnothing	Fixable thickness	Recommended loads	Basic price / 100 pcs	
								box	bulk
5 x 25	5	30	25	3,4	9	1	0,31	1,83 €	1,75 €
5 x 35	5	40	35	3,4	9	5	0,31	2,17 €	2,00 €
5 x 45	5	50	45	3,4	9	10	0,31	2,50 €	2,33 €
6 x 25	6	30	25	3,8	10	1	0,48	2,08 €	2,00 €
6 x 35	6	40	35	3,8	10	5	0,48	2,30 €	2,13 €
6 x 40	6	45	40	3,8	10	10	0,48	2,47 €	2,30 €
6 x 45	6	50	45	3,8	10	15	0,48	2,63 €	2,47 €
6 x 55	6	60	55	3,8	10	25	0,48	2,97 €	2,80 €
6 x 60	6	65	60	3,8	10	30	0,48	3,13 €	2,97 €
6 x 70	6	75	70	3,8	10	40	0,48	3,97 €	3,63 €
6 x 80	6	85	80	3,8	10	50	0,48	4,59 €	4,30 €
8 x 45	8	50	45	4,8	11	5	0,65	4,63 €	4,30 €
8 x 60	8	65	60	4,8	11	20	0,65	5,97 €	5,63 €
8 x 75	8	80	75	4,8	11	35	0,65	8,63 €	8,30 €
8 x 80	8	85	80	4,8	11	40	0,65	8,63 €	8,30 €
8 x 100	8	105	100	4,8	11	60	0,65	10,63 €	10,30 €
8 x 120	8	125	120	4,8	11	80	0,65	12,97 €	12,63 €
8 x 135	8	140	135	4,8	11	95	0,65	14,97 €	14,63 €

All figures are in mm

Recommended loads in kN
(1 kN \cong 100 Kg)

Nail Anchors with metric thread

NH-M



These plugs can be used for quick installation in internal and external construction work. Recommended where a rapid and large numbers of fixing are required. This type is available only with round head.

Application:

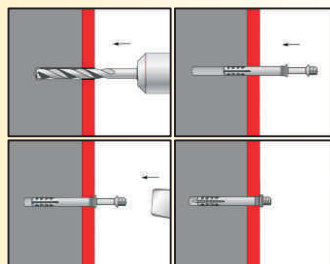
- concrete
- stone
- sand-stone

Advantages:

- fast and easy installation
- dismounting option

Material: Polyamide PA6 (Nylon)

Installation



Type NH - M – Technical data and price

Size	Drill \varnothing	Minimal drill depth	Anchor length	Screw \varnothing	Collar \varnothing	Fixable thickness	Recommended loads	Basic price / 100 pcs	
								box	bulk
6 x 40	6	45	40	3,8	10	10	0,48	4,77 €	4,30 €
8 x 60	8	65	60	4,8	11	20	0,65	11,69 €	10,52 €

All figures are in mm

Recommended loads in kN
(1 kN \cong 100 Kg)

Nail Anchors with stainless steel nail A2

NH - N



These plugs can be used for quick installation in internal and external construction work. Recommended for application in wet conditions. Nail screws are made of stainless steel A2.

Application:

- concrete
- stone
- sand-stone

Advantages:

- fast and easy installation
- dismounting option

Application is same as picture on page 9

Material: Polyamide PA6 (Nylon)

Type NH – N A2 – Technical data and price

Size	Drill \varnothing	Minimal drill depth	Anchor length	Screw \varnothing	Collar \varnothing	Fixable thickness	Recommended loads	Basic price / 100 pcs	
								box	bulk
6 x 40	6	45	40	3,8	10	10	0,48	15,10 €	14,90 €
6 x 60	6	65	60	3,8	10	30	0,48	20,38 €	20,18 €
8 x 60	8	65	60	4,8	11	20	0,65	33,21 €	32,96 €
8 x 80	8	85	80	4,8	11	40	0,65	35,09 €	34,79 €
8 x 100	8	105	100	4,8	11	60	0,65	37,36 €	37,06 €

All figures are in mm

Recommended loads in kN
(1 kN \cong 100 Kg)

Frame plugs RM



The RM plug has long expansion area and is suitable for through – fixing into cavity bricks etc.

The special internal design, the long expansion area, provides secure fixing into concrete, stone and softer material such as bricks and low density block work.

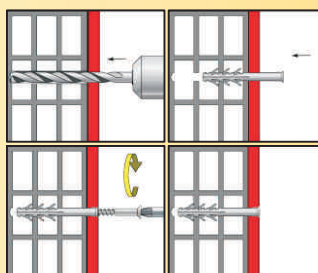
Application:

- hollow brick
- brick
- concrete
- stone

Advantages:

- strong anchoring
- high temperature resistance
- easy installation

Installation



Material: Polyamide PA6 (Nylon)

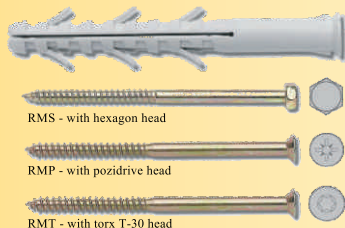
Type RM – Technical data and price

Size	Drill Ø	Minimal drill depth	Anchor length	Screw Ø	Fixable thickness	Recommended loads	Basic price / 100 pcs	
							box	bulk
8 x 60	8	70	55	5 - 5,5	5	0,75	3,13 €	2,80 €
8 x 80	8	90	75	5 - 5,5	25	0,75	3,63 €	3,30 €
8 x 100	8	110	95	5 - 5,5	45	0,75	4,47 €	4,13 €
8 x 120	8	130	115	5 - 5,5	65	0,75	5,47 €	5,13 €
8 x 140	8	150	135	5 - 5,5	85	0,75	6,13 €	5,80 €
8 x 160	8	170	155	5 - 5,5	105	0,75	7,30 €	6,97 €
10 x 80	10	90	75	6 - 7	15	0,92	5,47 €	5,13 €
10 x 100	10	110	95	6 - 7	35	0,92	6,63 €	5,97 €
10 x 120	10	130	115	6 - 7	55	0,92	7,97 €	7,30 €
10 x 140	10	150	135	6 - 7	75	0,92	9,13 €	8,47 €
10 x 160	10	170	155	6 - 7	95	0,92	10,30 €	9,63 €

All figures are in mm

Recommended loads in kN
(1 kN \approx 100 Kg)

Frame plugs with screws RMS, RMP, RMT



The RM plug has long expansion area and is suitable for through – fixing into cavity bricks etc. The special internal design, the long expansion area, provides secure fixing into concrete, stone and softer material such as bricks and low density block work.

RM plugs are available in sets with hexagon, pozidrive and torx head.

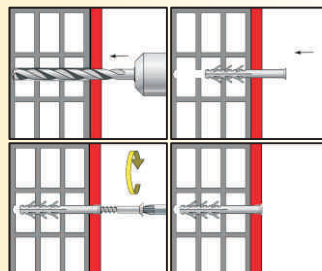
Application:

- hollow brick
- brick
- concrete
- stone

Advantages:

- strong anchoring
- high temperature resistance
- easy installation
- complete package

Installation



Material: Polyamide PA6 (Nylon)

Type RMS, RMP and RMT – Technical data and price

Size	Drill Ø	Minimal drill depth	Anchor length	Screw Ø	Fixable thickness	Recommended loads	Basic price / 100 pcs	
							RMS	RMT, RMP
8 x 60	8	70	55	5 - 5,5	5	0,75	8,30 €	7,47 €
8 x 80	8	90	75	5 - 5,5	25	0,75	9,97 €	8,97 €
8 x 100	8	110	95	5 - 5,5	45	0,75	12,30 €	11,13 €
8 x 120	8	130	115	5 - 5,5	65	0,75	15,63 €	14,13 €
8 x 140	8	150	135	5 - 5,5	85	0,75	17,97 €	16,30 €
8 x 160	8	170	155	5 - 5,5	105	0,75	22,30 €	20,30 €
10 x 80	10	90	75	6 - 7	15	0,92	16,13 €	14,63 €
10 x 100	10	110	95	6 - 7	35	0,92	18,13 €	16,63 €
10 x 120	10	130	115	6 - 7	55	0,92	21,80 €	19,97 €
10 x 140	10	150	135	6 - 7	75	0,92	26,13 €	23,97 €
10 x 160	10	170	155	6 - 7	95	0,92	33,30 €	30,63 €

All figures are in mm

Recommended loads in kN
(1 kN \approx 100 Kg)

Insulation plugs with nylon nail



TTH



Plug for general purpose use in hard and soft insulation pads. Special plug used for fixation of insulation material. Plug is easily installed only by hammering in. High resistant in meteorological conditions.

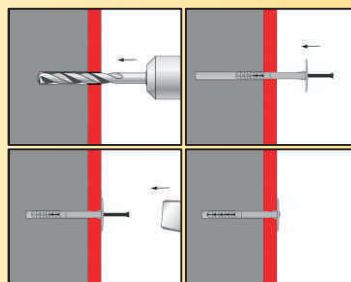
Application:

- concrete
- brick
- stone
- hollow brick

Advantages:

- easy installation
- fast installation
- low price
- no thermal bridge

Installation



Material: Plug – Copolymer, Nail – Polyamide (Nylon) with glass

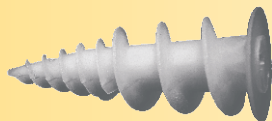
Type TTH – Technical data and price

Size	Drill \varnothing	Minimum drill depth	Fixing depth	Anchor length	Disc \varnothing	Insulation thickness	Recommended loads		Basic price per 100 pcs
							concrete	brick	
10/60 - 90	10	45	40	90	60	40	0,187	0,150	5,58 €
10/60 - 110	10	45	40	110	60	60	0,187	0,150	6,29 €
10/60 - 120	10	45	40	120	60	70	0,187	0,150	6,47 €
10/60 - 130	10	45	40	130	60	80	0,187	0,150	6,65 €
10/60 - 140	10	45	40	140	60	90	0,187	0,150	7,01 €
10/60 - 150	10	45	40	150	60	100	0,187	0,150	7,37 €
10/60 - 160	10	45	40	160	60	110	0,187	0,150	7,91 €
10/60 - 170	10	45	40	170	60	120	0,187	0,150	8,63 €
10/60 - 180	10	45	40	180	60	130	0,187	0,150	9,35 €
10/60 - 190	10	45	40	190	60	140	0,187	0,150	10,07 €
10/60 - 210	10	45	40	210	60	160	0,187	0,150	11,51 €

All figures are in mm

Recommended loads in kN
(1 kN \cong 100 Kg)

Turbo plugs TURBO



Special plug for application in gypsum plasterboard. Plug is easily installed to gypsum plasterboard without any special tool. The material is fixed with the chipboard or gypsum screw.

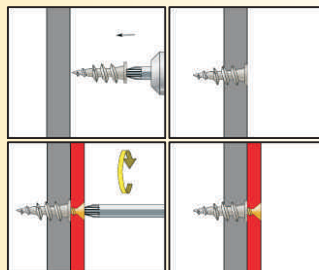
Application:

- gypsum plasterboard

Advantages:

- easy installation
- fast installation
- low price

Installation



Material: Polyamide (Nylon) with glass

Type TURBO - Technical data and price

Size	Anchor lenght	Screw \varnothing	Recommended loads	Basic price / 100 pcs	
				box	bulk
10 x 35	35	3,5 - 4	0,15	3,00 €	2,70 €

All figures are in mm

Recommended loads in kN
(1 kN \cong 100 Kg)



CERTIFICATES

Certification of our product by Technical and Test Institute for Construction in Prague (TZÚS)

Nail plug



Standard anchor



Universal anchor



Frame plug



Insulation plug



NOTES

Contact information

Direction from Prague (Germany, Poland)



Direction from Brno (Slovakia, Austria)



TRUHLÁŘ & spol., v.o.s.

Hlubočinka 812
251 68 Hlubočinka (Praha-východ)
Czech Republic

tel.: +420 323 671 745

fax: +420 323 671 744

e-mail: velkoobchod@truhlaraspol.com

<http://www.truhlaraspol.com>